

Samples (Running) - Microsoft Visual Studio

File Edit View Project Build Debug Team Tools Test Qt VS Tools Analyze Window Help

Process: [2684] crossroad\_camera\_demo.exe Lifecycle Events Thread: Stack Frame: Application Insights

```
main.cpp
crossroad_camera_demo (Global Scope)

// Copyright (C) 2018-2019 Intel Corporation
// SPDX-License-Identifier: Apache-2.0
//

/**
 * \brief The entry point for the Inference Engine crossroad_camera demo application
 * \file crossroad_camera_demo/main.cpp
 * \example crossroad_camera_demo/main.cpp
 */
#include <gflags/gflags.h>
#include <functional>
#include <iostream>
#include <fstream>
#include <random>
#include <memory>
#include <chrono>
#include <algorithm>
#include <iterator>
#include <map>
#include <string>
#include <vector>

#include <inference_engine.hpp>

#include <samples/ocv_common.hpp>
#include "crossroad_camera_demo.hpp"
#include <ext_list.hpp>

using namespace InferenceEngine;

bool ParseAndCheckCommandLine(int argc, char *argv[]) {
    // -----Parsing and validation of input args-----

    gflags::ParseCommandLineNonHelpFlags(&argc, &argv, true);
    if (FLAGS_h) {
```

crossroad\_camera\_demo.exe - System Error

The program can't start because hdf5.dll is missing from your computer. Try reinstalling the program to fix this problem.

OK

Solution Explorer

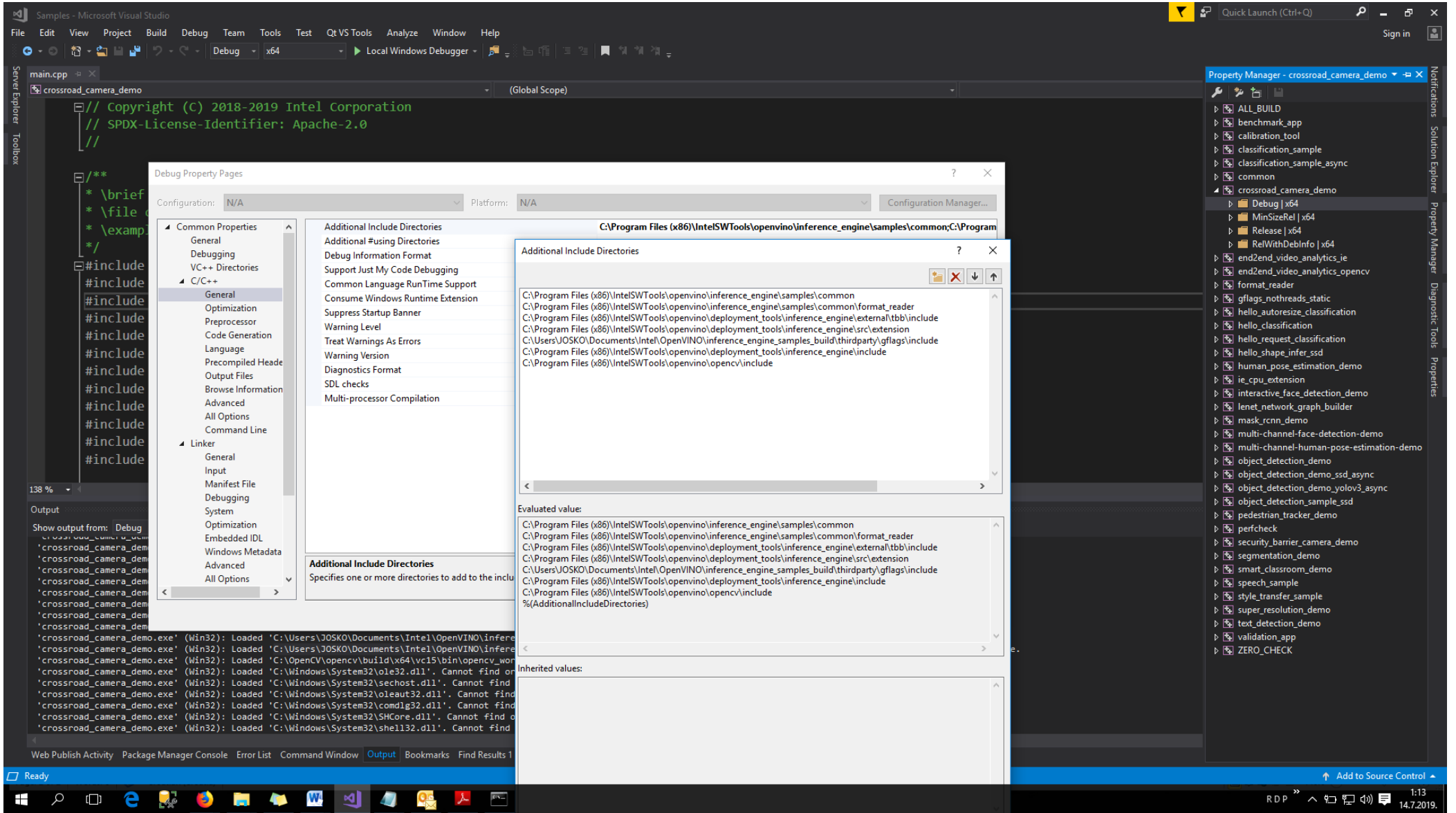
- Solution 'Samples' (37 projects)
- ALL\_BUILD
- benchmark\_app
- calibration\_tool
- classification\_sample
- classification\_sample\_async
- common
- crossroad\_camera\_demo**
  - References
  - External Dependencies
  - src
    - CMakeLists.txt
  - end2end\_video\_analytics\_ie
  - end2end\_video\_analytics\_opencv
  - format\_reader
  - gflags\_nothreads\_static
  - hello\_autoreize\_classification
  - hello\_classification
  - hello\_request\_classification
  - hello\_shape\_infer\_ssd
  - human\_pose\_estimation\_demo
  - ie\_cpu\_extension
  - interactive\_face\_detection\_demo
  - lenet\_network\_graph\_builder
  - mask\_rcnn\_demo
  - multi-channel-face-detection-demo
  - multi-channel-human-pose-estimation-demo
  - object\_detection\_demo
  - object\_detection\_demo\_ssd\_async
  - object\_detection\_demo\_yolov3\_async
  - object\_detection\_sample\_ssd
  - pedestrian\_tracker\_demo
  - perfcheck
  - security\_barrier\_camera\_demo
  - segmentation\_demo
  - smart\_classroom\_demo
  - speech\_sample
  - style\_transfer\_sample
  - super\_resolution\_demo
  - text\_detection\_demo
  - validation\_app
  - ZERO\_CHECK

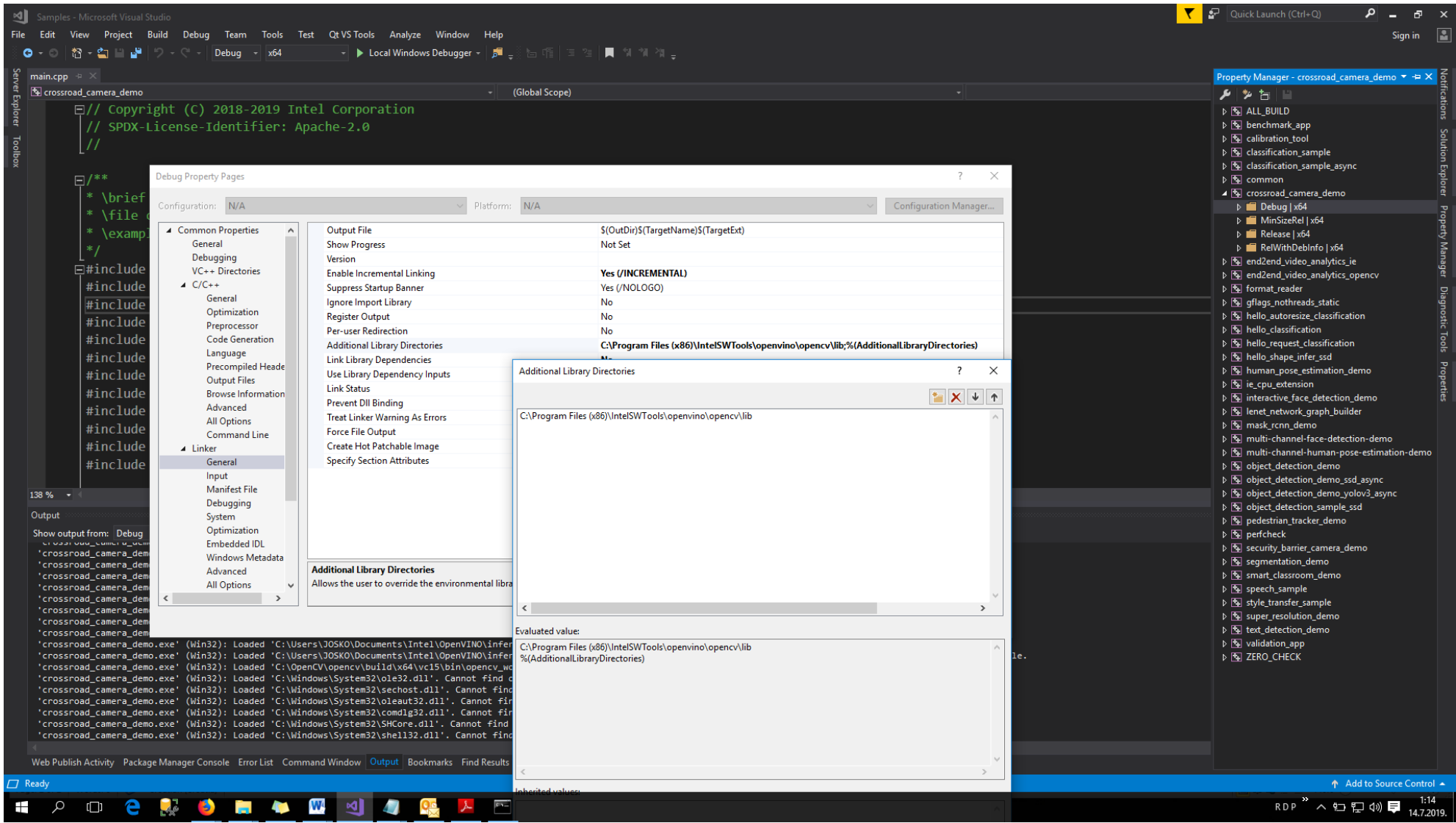
Call Stack Breakpoints Exception Settings Command Window Immediate Window Output Error List

This item does not support previewing

Add to Source Control

RDP 1:10 14.7.2019





Debug Property Pages

Configuration: N/A Platform: N/A Configuration Manager...

- Common Properties
  - General
  - Debugging
  - VC++ Directories
  - C/C++
    - General
    - Optimization
    - Preprocessor
    - Code Generation
    - Language
    - Precompiled Headers
    - Output Files
    - Browse Information
    - Advanced
    - All Options
    - Command Line
  - Linker
    - General
    - Input
    - Manifest File
    - Debugging
    - System
    - Optimization
    - Embedded IDL
    - Windows Metadata
    - Advanced
    - All Options

Output File: \$(OutDir)\\$(TargetName)\\$(TargetExt)

Show Progress: Not Set

Version: Not Set

Enable Incremental Linking: Yes (/INCREMENTAL)

Suppress Startup Banner: Yes (/NOLOGO)

Ignore Import Library: No

Register Output: No

Per-user Redirection: No

Additional Library Directories: C:\Program Files (x86)\IntelSWTools\openvino\opencv\lib;%(AdditionalLibraryDirectories)

Link Library Dependencies: No

Use Library Dependency Inputs: No

Link Status: No

Prevent Dll Binding: No

Treat Linker Warning As Errors: No

Force File Output: No

Create Hot Patchable Image: No

Specify Section Attributes: No

Additional Library Directories

Allows the user to override the environmental library paths.

Additional Library Directories

C:\Program Files (x86)\IntelSWTools\openvino\opencv\lib

Evaluated value:

C:\Program Files (x86)\IntelSWTools\openvino\opencv\lib

%(AdditionalLibraryDirectories)

- Property Manager - crossroad\_camera\_demo
- ALL\_BUILD
  - benchmark\_app
  - calibration\_tool
  - classification\_sample
  - classification\_sample\_async
  - common
  - crossroad\_camera\_demo
    - Debug | x64
      - MinSizeRel | x64
      - Release | x64
      - RelWithDebInfo | x64
    - end2end\_video\_analytics\_ie
    - end2end\_video\_analytics\_opencv
    - format\_reader
    - gflags\_nothreads\_static
    - hello\_autoreize\_classification
    - hello\_classification
    - hello\_request\_classification
    - hello\_shape\_infer\_ssd
    - human\_pose\_estimation\_demo
    - ie\_cpu\_extension
    - interactive\_face\_detection\_demo
    - lenet\_network\_graph\_builder
    - mask\_rcnn\_demo
    - multi-channel-face-detection-demo
    - multi-channel-human-pose-estimation-demo
    - object\_detection\_demo
    - object\_detection\_demo\_ssd\_async
    - object\_detection\_demo\_yolov3\_async
    - object\_detection\_sample\_ssd
    - pedestrian\_tracker\_demo
    - perfcheck
    - security\_barrier\_camera\_demo
    - segmentation\_demo
    - smart\_classroom\_demo
    - speech\_sample
    - style\_transfer\_sample
    - super\_resolution\_demo
    - text\_detection\_demo
    - validation\_app
    - ZERO\_CHECK

138 %

Output

Show output from: Debug

```

crossroad_camera_demo.exe (Win32): Loaded 'C:\Users\JOSKO\Documents\Intel\OpenVINO\infer
crossroad_camera_demo.exe (Win32): Loaded 'C:\Users\JOSKO\Documents\Intel\OpenVINO\infer
crossroad_camera_demo.exe (Win32): Loaded 'C:\OpenCV\opencv\build\x64\vc15\bin\opencv_wd
crossroad_camera_demo.exe (Win32): Loaded 'C:\Windows\System32\ole32.dll'. Cannot find
crossroad_camera_demo.exe (Win32): Loaded 'C:\Windows\System32\sechost.dll'. Cannot find
crossroad_camera_demo.exe (Win32): Loaded 'C:\Windows\System32\oleaut32.dll'. Cannot fin
crossroad_camera_demo.exe (Win32): Loaded 'C:\Windows\System32\comctl32.dll'. Cannot fin
crossroad_camera_demo.exe (Win32): Loaded 'C:\Windows\System32\SHCore.dll'. Cannot find
crossroad_camera_demo.exe (Win32): Loaded 'C:\Windows\System32\shell32.dll'. Cannot find

```

Web Publish Activity Package Manager Console Error List Command Window Output Bookmarks Find Results

