

Dear Lionel,

I had some problems installing Intel Parallel Studio XE Cluster Edition.
After a while I received the following email from an Intel representative:

=====
we are upgrading your Intel Cluster Studio Licenses XXX-XXXXXXX to an Intel Parallel Studio XE Cluster Edition License (2016) of the same type (Academic, Named User, Windows edition, with a support expiration date of 17.07.2016).

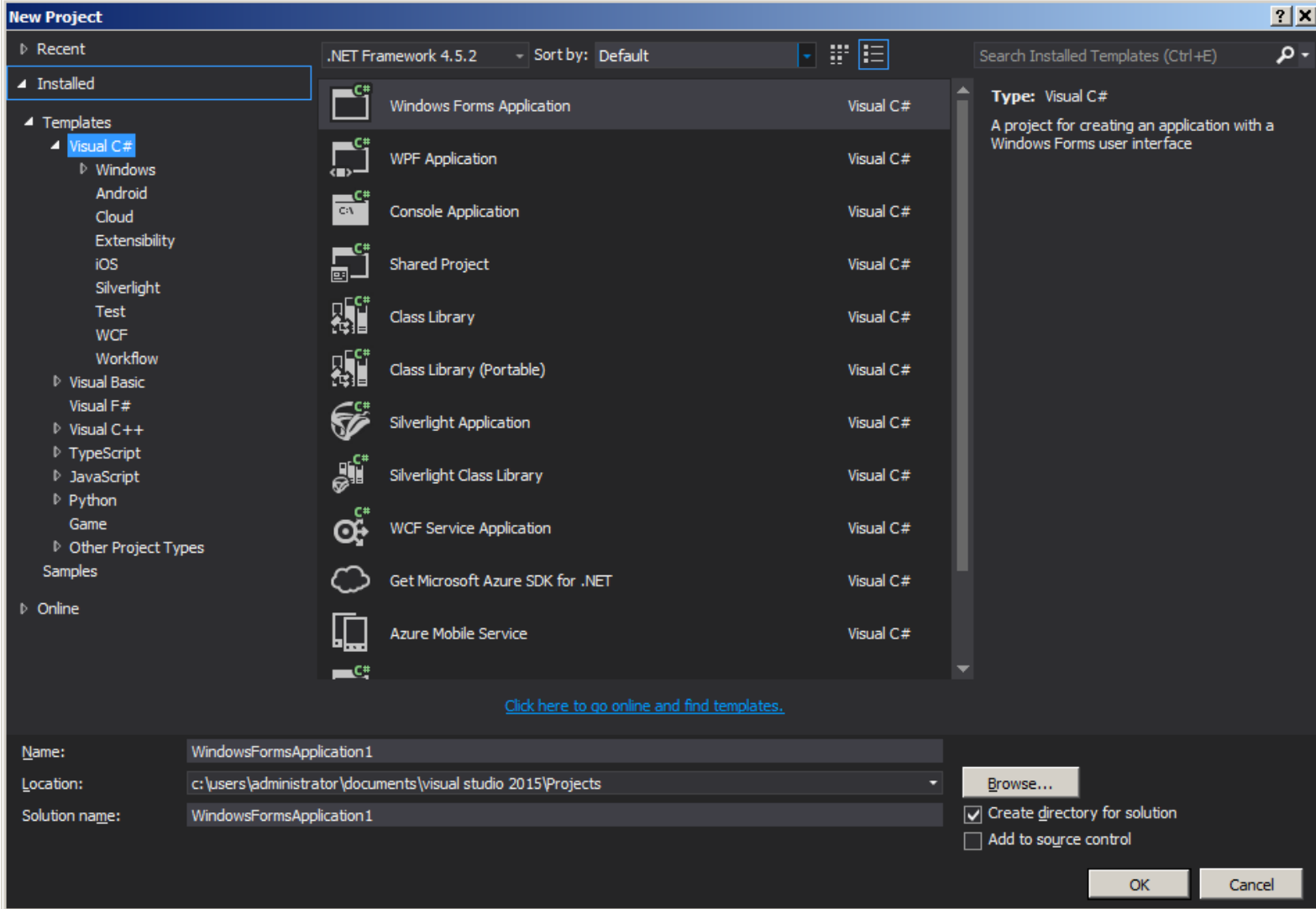
Please find below the serial number and instructions to register the serial number.

Serial number of the new license: XXX-XXXXXXX
=====

Then, I downloaded and installed the software and it (partially) works.
It works on the command line, properly, but it does not integrate into my Visual Studio Community 2015. I do not see the Fortran compiler when I want to start a new project.
I checked a little with the instructions and found that Common tools for C++ 2015 should be installed but that is the case, see below.

Can you put me on the right track please?

Best regards,
Hans De Raedt



Visual Studio

Community 2015

Features Languages

Select features


- Programming Languages
 - Visual C++
 - Common Tools for Visual C++ 2015
 - Microsoft Foundation Classes for C++
 - Windows XP Support for C++
 - Visual F#
 - Python Tools for Visual Studio
- Windows and Web Development
- Cross Platform Mobile Development
- Common Tools

Select All

[Reset Defaults](#)

Setup requires up to 10 MB across all drives.

[Back](#)

 [UPDATE](#)