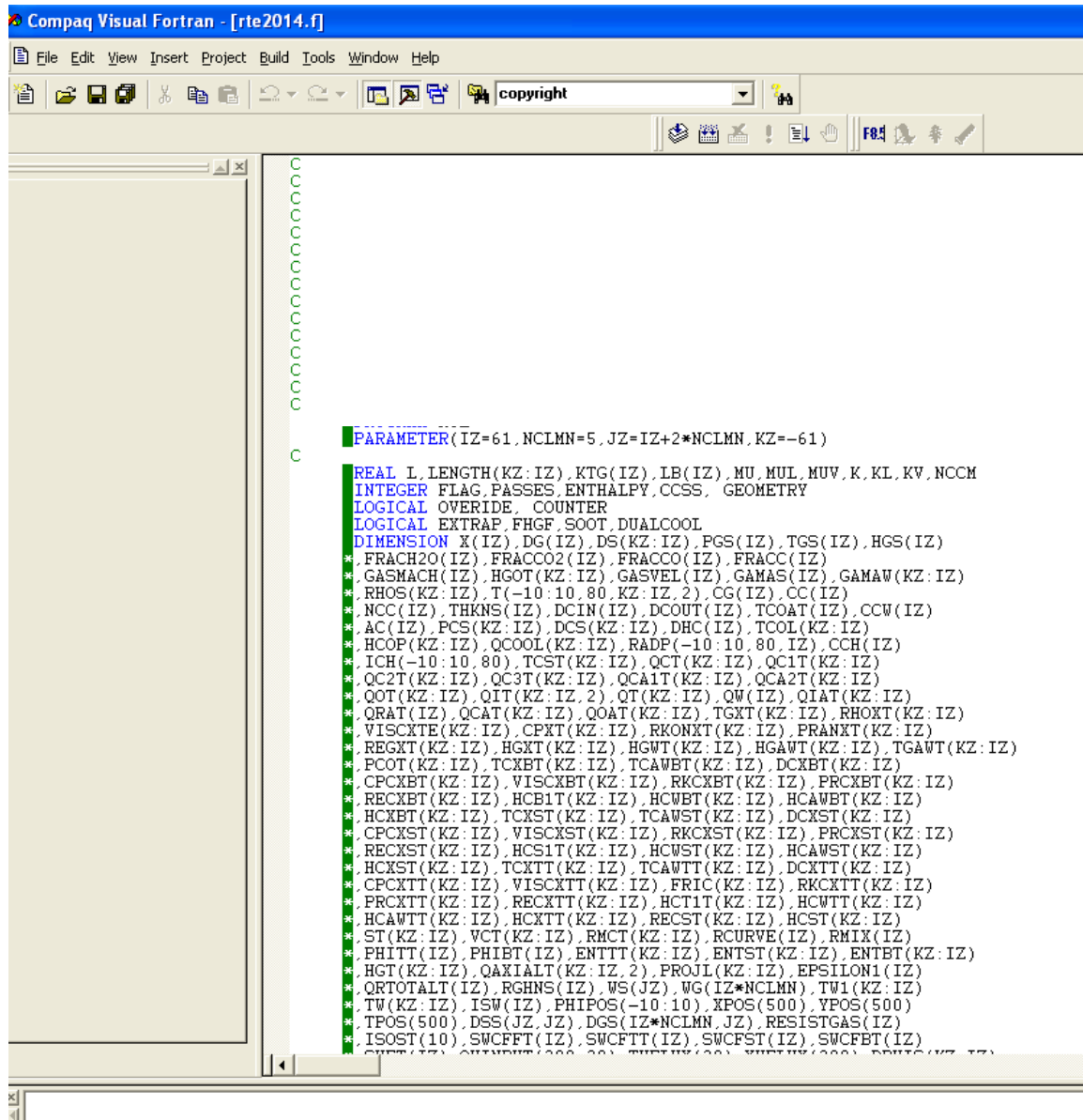


# Migrating from CVF to Visual Studio Fortran

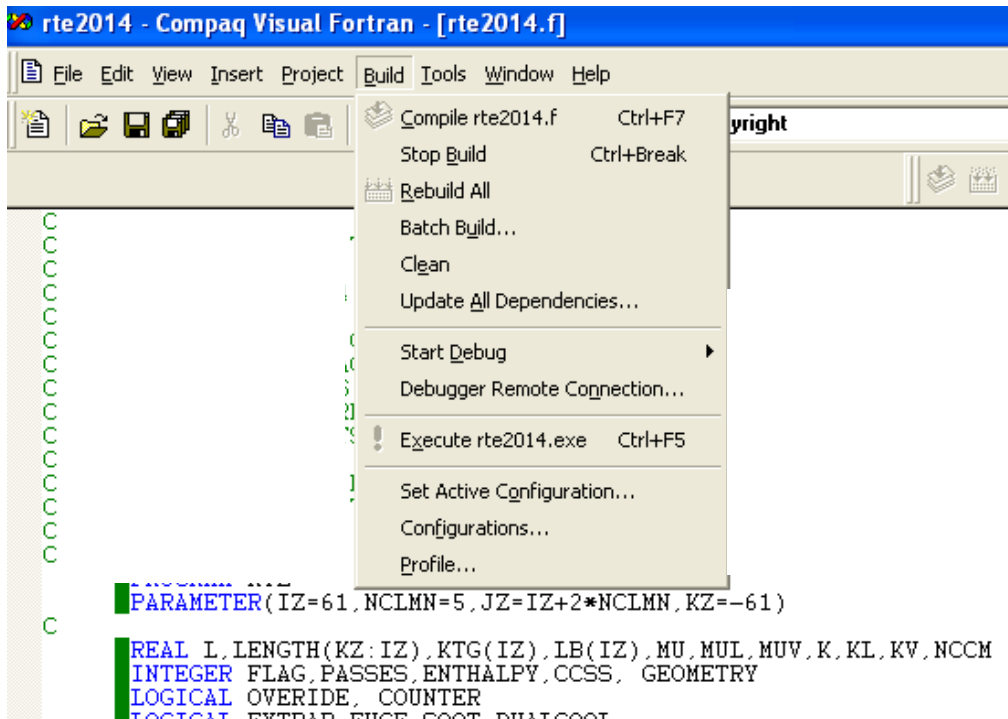
## CVF Interface



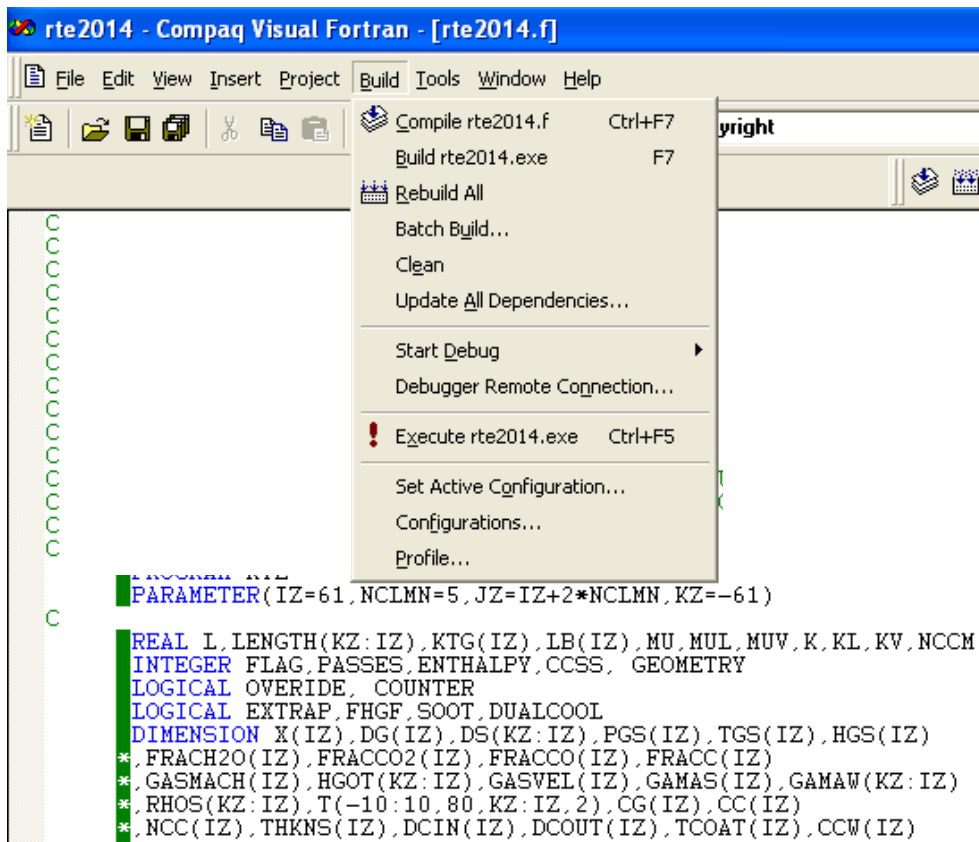
The screenshot shows the Compaq Visual Fortran (CVF) interface. The title bar reads "Compaq Visual Fortran - [rte2014.f]". The menu bar includes "File", "Edit", "View", "Insert", "Project", "Build", "Tools", "Window", and "Help". The toolbar contains icons for file operations and a dropdown menu currently set to "copyright". The main window displays a Fortran program with the following code:

```
PARAMETER(IZ=61,NCLMN=5,JZ=IZ+2*NCLMN,KZ=-61)
REAL L,LENGTH(KZ:IZ),KTG(IZ),LB(IZ),MU,MUL,MUV,K,KL,KV,NCCM
INTEGER FLAG,PASSES,ENTHALPY,CCSS,GEOMETRY
LOGICAL OVERRIDE,COUNTER
LOGICAL EXTRAP,FHGF,SOOT,DUALCOOL
DIMENSION X(IZ),DG(IZ),DS(KZ:IZ),PGS(IZ),TGS(IZ),HGS(IZ)
*FRACH20(IZ),FRACCO2(IZ),FRACCO(IZ),FRACC(IZ)
*GASMACH(IZ),HGOT(KZ:IZ),GASVEL(IZ),GAMAS(IZ),GAMAW(KZ:IZ)
*,RHOS(KZ:IZ),T(-10:10,80,KZ:IZ,2),CG(IZ),CC(IZ)
*,NCC(IZ),THKNS(IZ),DCIN(IZ),DCOUT(IZ),TCOAT(IZ),CCW(IZ)
*,AC(IZ),PCS(KZ:IZ),DCS(KZ:IZ),DHC(IZ),TCOL(KZ:IZ)
*,HCOP(KZ:IZ),QCOOL(KZ:IZ),RADP(-10:10,80,IZ),CCH(IZ)
*,ICH(-10:10,80),TCST(KZ:IZ),OCT(KZ:IZ),QC1T(KZ:IZ)
*,QC2T(KZ:IZ),QC3T(KZ:IZ),QCA1T(KZ:IZ),QCA2T(KZ:IZ)
*,QOT(KZ:IZ),QIT(KZ:IZ,2),QT(KZ:IZ),QW(IZ),QIAT(KZ:IZ)
*,QRAT(IZ),QCAT(KZ:IZ),QOAT(KZ:IZ),TGXT(KZ:IZ),RHOXT(KZ:IZ)
*,VISCXTE(KZ:IZ),CPXT(KZ:IZ),RKONXT(KZ:IZ),PRANXT(KZ:IZ)
*,REGXT(KZ:IZ),HGXT(KZ:IZ),HGWT(KZ:IZ),HGAWT(KZ:IZ),TGAWT(KZ:IZ)
*,PCOT(KZ:IZ),TCXBT(KZ:IZ),TCAWBT(KZ:IZ),DCXBT(KZ:IZ)
*,CPCXBT(KZ:IZ),VISCXBT(KZ:IZ),RKCXBT(KZ:IZ),PRCXBT(KZ:IZ)
*,RECKBT(KZ:IZ),HCB1T(KZ:IZ),HCWBT(KZ:IZ),HCAWBT(KZ:IZ)
*,HCXBT(KZ:IZ),TCXST(KZ:IZ),TCAWST(KZ:IZ),DCXST(KZ:IZ)
*,CPCXST(KZ:IZ),VISCXST(KZ:IZ),RKCXST(KZ:IZ),PRCXST(KZ:IZ)
*,RECKST(KZ:IZ),HCS1T(KZ:IZ),HCWST(KZ:IZ),HCAWST(KZ:IZ)
*,HCXST(KZ:IZ),TCXTT(KZ:IZ),TCAWTT(KZ:IZ),DCXTT(KZ:IZ)
*,CPCXTT(KZ:IZ),VISCXTT(KZ:IZ),FRIC(KZ:IZ),RKCXTT(KZ:IZ)
*,PRCXTT(KZ:IZ),RECTXT(KZ:IZ),HCT1T(KZ:IZ),HCWTT(KZ:IZ)
*,HCAWTT(KZ:IZ),HCXTT(KZ:IZ),RECST(KZ:IZ),HCST(KZ:IZ)
*,ST(KZ:IZ),VCT(KZ:IZ),RMCT(KZ:IZ),RCURVE(IZ),RMIX(IZ)
*,PHITT(IZ),PHIBT(IZ),ENTTT(KZ:IZ),ENTST(KZ:IZ),ENTBT(KZ:IZ)
*,HGT(KZ:IZ),QAXIALT(KZ:IZ,2),PROJL(KZ:IZ),EPSILON1(IZ)
*,ORTOTALT(IZ),RGHNS(IZ),WS(JZ),WG(IZ*NCLMN),TW1(KZ:IZ)
*,TW(KZ:IZ),ISW(IZ),PHIPOS(-10:10),XPOS(500),YPOS(500)
*,TPOS(500),DSS(JZ,JZ),DGS(IZ*NCLMN,JZ),RESISTGAS(IZ)
*,ISOST(10),SWCFFT(IZ),SWCFTT(IZ),SWCFST(IZ),SWCFBT(IZ)
```

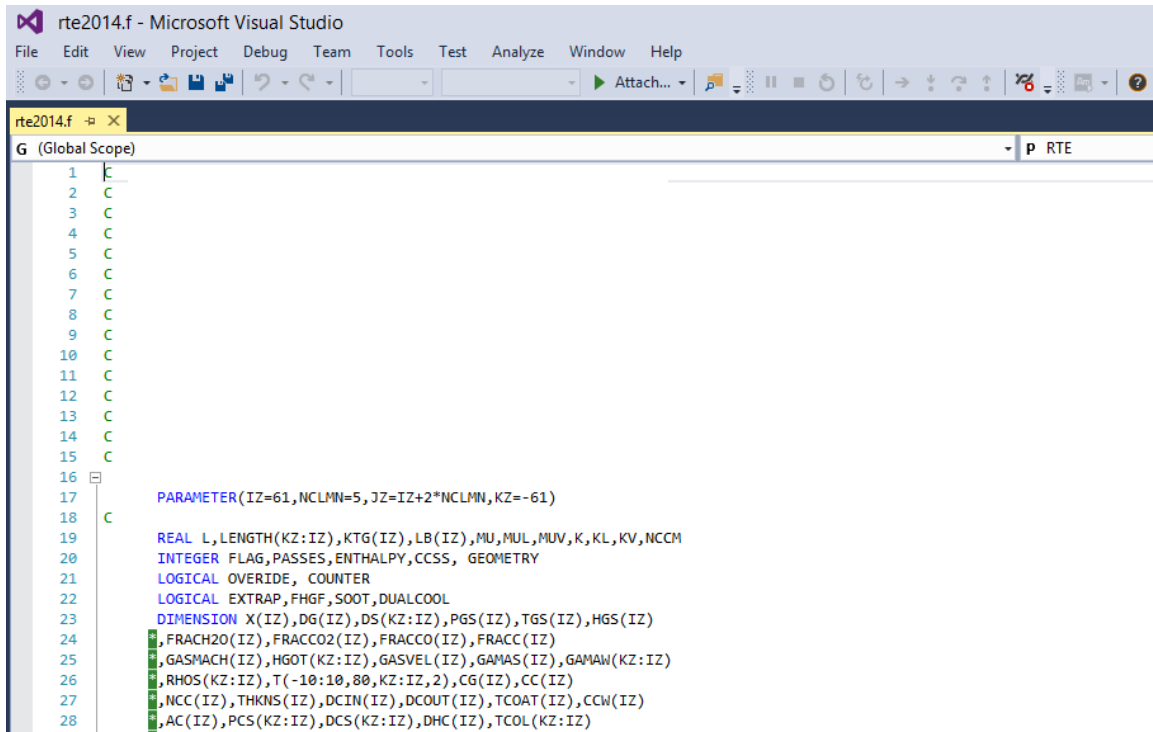
Compiling program can be done by clicking on Build and choosing compile 2014.f (or simply Ctrl+F7).



Then after successful compilation under Build I choose “Build rte2014.exe” or press F7 as shown below:



Visual Studio Interface for the same program:



```
rte2014.f - Microsoft Visual Studio
File Edit View Project Debug Team Tools Test Analyze Window Help
Attach...
rte2014.f
G (Global Scope) RTE
1 C
2 C
3 C
4 C
5 C
6 C
7 C
8 C
9 C
10 C
11 C
12 C
13 C
14 C
15 C
16
17 PARAMETER (IZ=61,NCLMN=5,JZ=IZ+2*NCLMN,KZ=-61)
18 C
19 REAL L,LENGTH(KZ:IZ),KTG(IZ),LB(IZ),MU,MUL,MUV,K,KL,KV,NCCM
20 INTEGER FLAG,PASSES,ENTHALPY,CCSS,GEOMETRY
21 LOGICAL OVERRIDE,COUNTER
22 LOGICAL EXTRAP,FHGF,SOOT,DUALCOOL
23 DIMENSION X(IZ),DG(IZ),DS(KZ:IZ),PGS(IZ),TGS(IZ),HGS(IZ)
24 ,FRACH20(IZ),FRACCO2(IZ),FRACCO(IZ),FRACC(IZ)
25 ,GASMACH(IZ),HGOT(KZ:IZ),GASVEL(IZ),GAMAS(IZ),GAMAW(KZ:IZ)
26 ,RHOS(KZ:IZ),T(-10:10,80,KZ:IZ,2),CG(IZ),CC(IZ)
27 ,NCC(IZ),THKNS(IZ),DCIN(IZ),DCOUT(IZ),TCOAT(IZ),CCW(IZ)
28 ,AC(IZ),PCS(KZ:IZ),DCS(KZ:IZ),DHC(IZ),TCOL(KZ:IZ)
```

**There is no build on the toolbar on the toolbar. I tried other options but they are not working.**

**What do you suggest?**