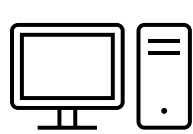
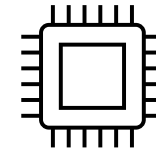


# Hardware/Software Setup



1Gbps Ethernet connectivity (no switch)



## **Computer**

Intel i7-8700

*Ethernet Card:*

Intel Gigabit CT Desktop Adapter

Windows 10 Pro

Command:

*iperf3.exe -s*

## **intelFPGA Arria 10 DevKit**

Rev. C

*Software:*

A10 SoC GSRD 2020.11

Automated test:

*Python3 TestSequence.py*

Manual single test:

*iperf3 -c 192.168.2.118*