

HAXM Failing on Windows 7

“Failed to configure driver: unknown error. Failed to open driver.”

David Price

5/28/2015

Control Panel > All Control Panel Items > System

View basic information about your computer

Windows edition
Windows 7 Enterprise
Copyright © 2009 Microsoft Corporation. All rights reserved

Control Panel Home

- Device Manager
- Remote settings
- System protection

System

Rating: **5.9** Your Windows Experience Index needs to be refreshed

Processor: Intel(R) Core(TM) i7-2720QM CPU @ 2.20GHz 2.19 GHz

Installed memory (RAM): 6.00 GB (5.88 GB usable)

System type: 64-bit Operating System

Pen and Touch: No Pen or Touch Input is available for this Display

Computer name, domain, and workgroup settings

Computer name: [Redacted] [Change settings](#)

Full computer name: [Redacted]

Computer description: [Redacted]

Domain: [Redacted]

Windows activation

Windows is activated

Product ID: [Redacted] [Change product key](#)

ask for genuine Microsoft software
Learn more online...

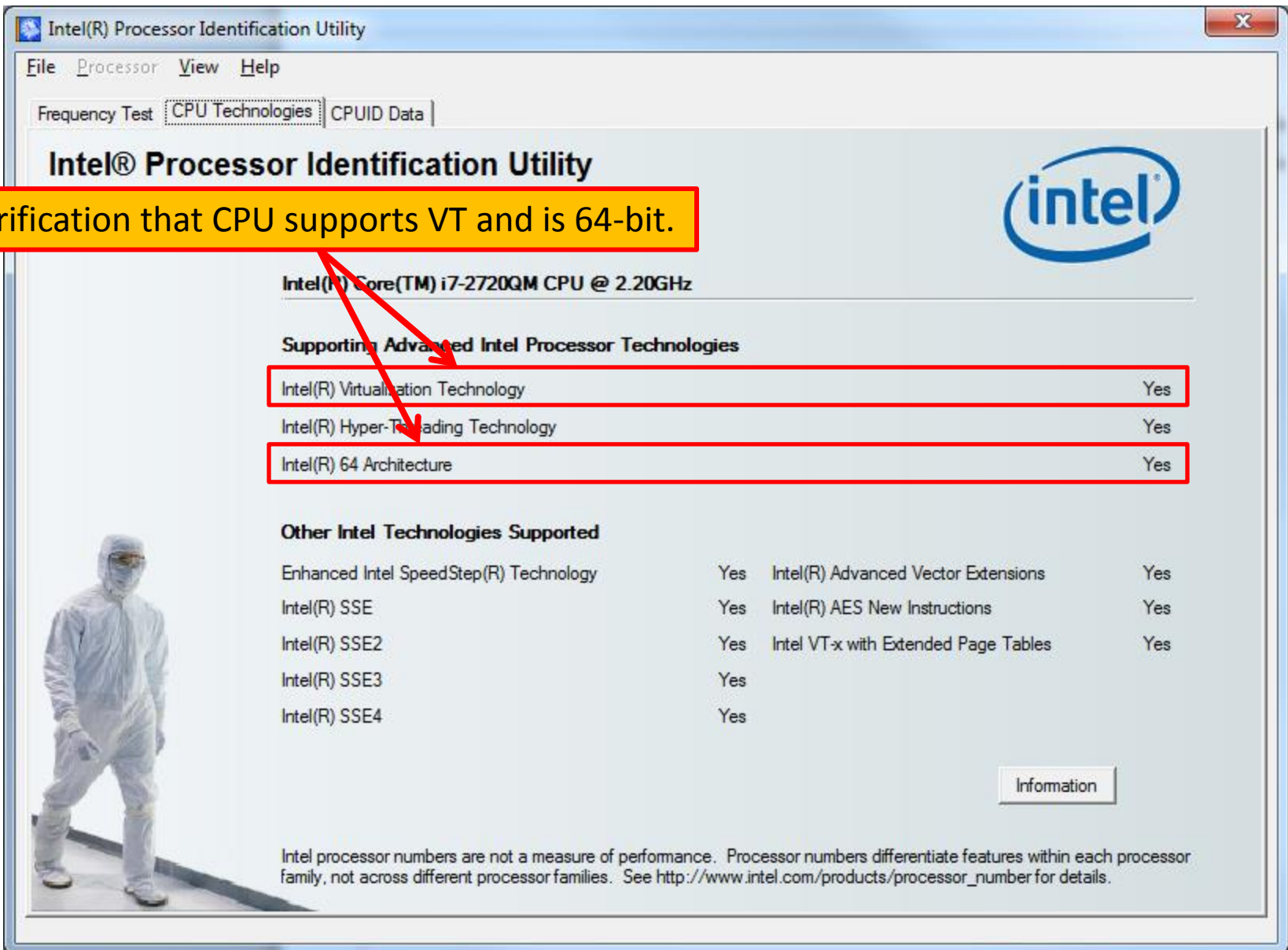
See also

- Action Center
- Windows Update
- Performance Information and Tools

CPU supports VT and NX bit (XD).

Verified at:

http://ark.intel.com/products/50067/Intel-Core-i7-2720QM-Processor-6M-Cache-up-to-3_30-GHz



Verification that CPU supports VT and is 64-bit.

Intel(R) Core(TM) i7-2720QM CPU @ 2.20GHz

Supporting Advanced Intel Processor Technologies

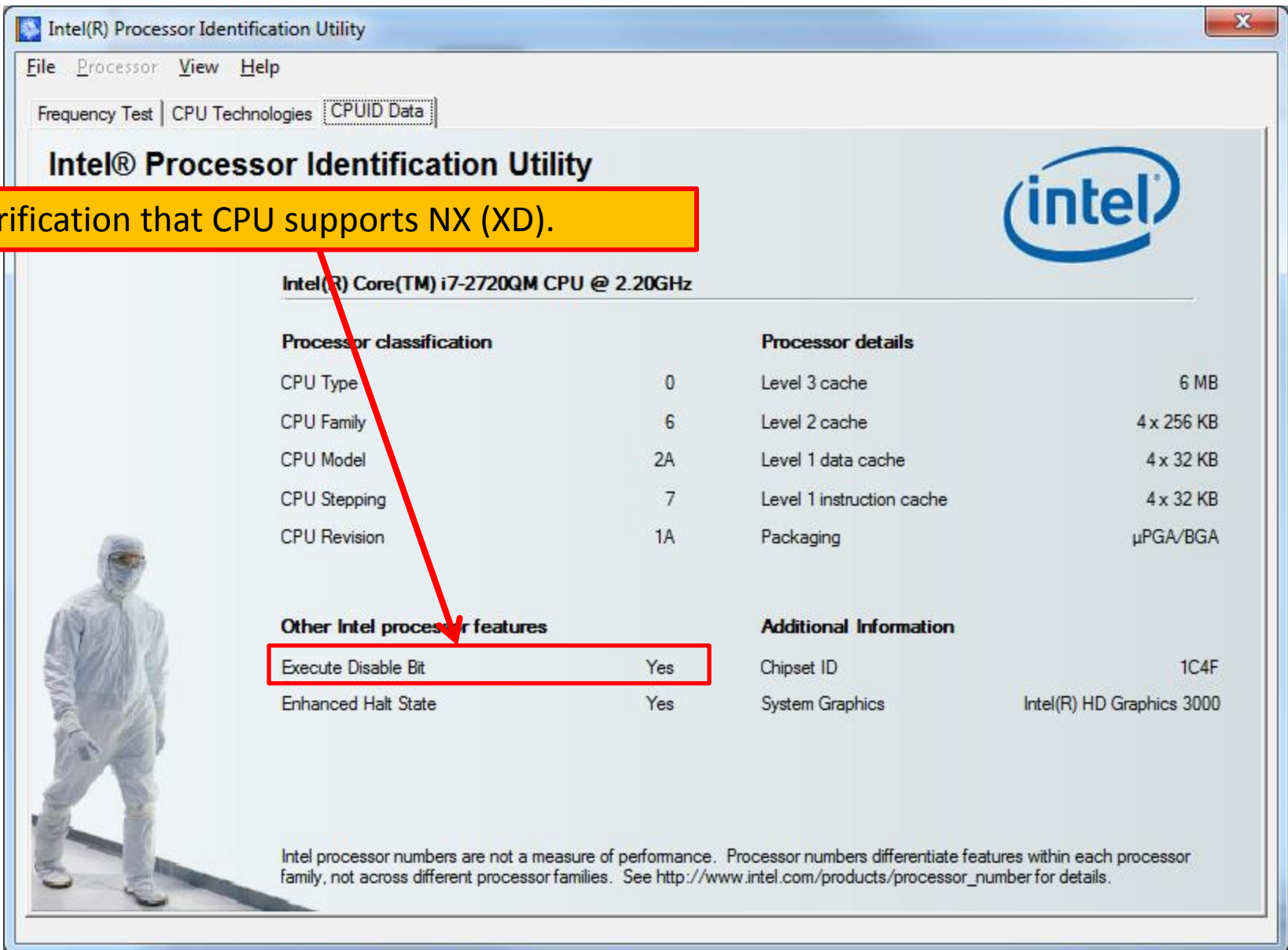
Intel(R) Virtualization Technology	Yes
Intel(R) Hyper-Threading Technology	Yes
Intel(R) 64 Architecture	Yes

Other Intel Technologies Supported

Enhanced Intel SpeedStep(R) Technology	Yes	Intel(R) Advanced Vector Extensions	Yes
Intel(R) SSE	Yes	Intel(R) AES New Instructions	Yes
Intel(R) SSE2	Yes	Intel VT-x with Extended Page Tables	Yes
Intel(R) SSE3	Yes		
Intel(R) SSE4	Yes		

Information

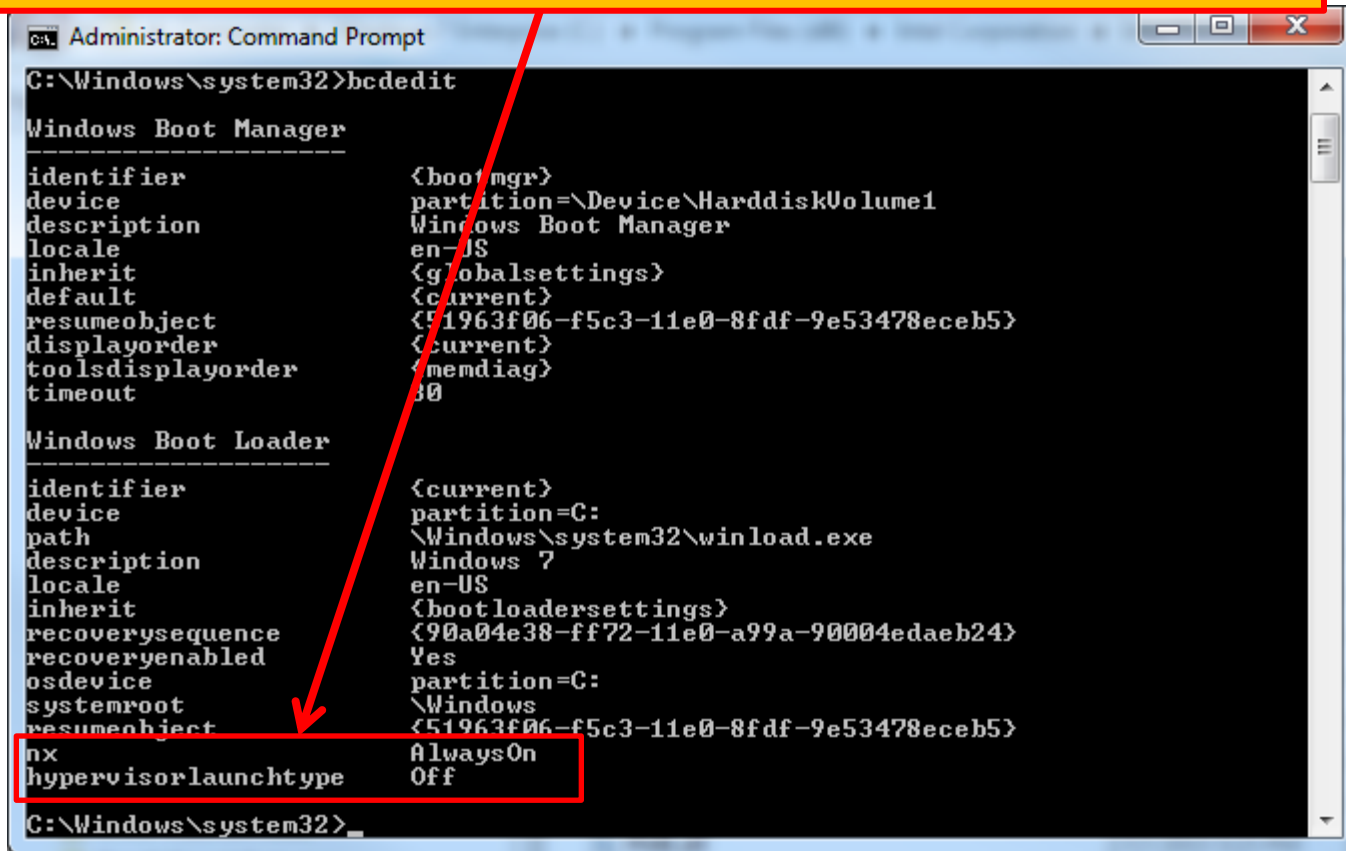
Intel processor numbers are not a measure of performance. Processor numbers differentiate features within each processor family, not across different processor families. See http://www.intel.com/products/processor_number for details.



Verification that CPU supports NX (XD).

bcdedit settings for NX bit (XD) – AlwaysOn

Also – make sure Hyper-V is not on (it isn't installed, but since nothing was working I included this just in case).



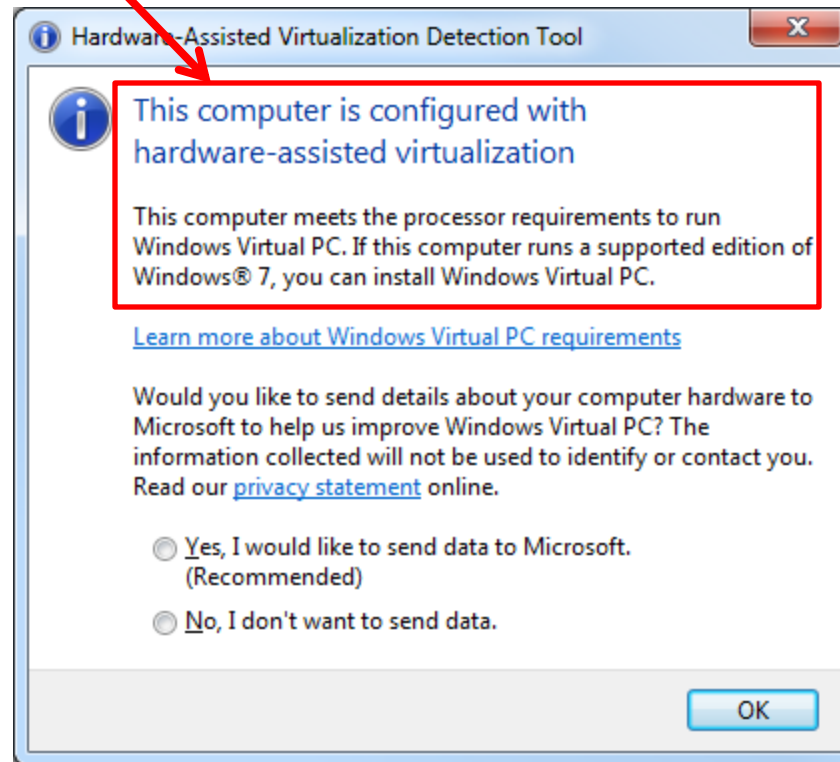
```
Administrator: Command Prompt
C:\Windows\system32>bcdedit

Windows Boot Manager
-----
identifier          <bootmgr>
device              partition=\Device\HarddiskVolume1
description         Windows Boot Manager
locale              en-US
inherit             <globalsettings>
default             <current>
resumeobject        <51963f06-f5c3-11e0-8fdf-9e53478eceb5>
displayorder        <current>
toolsdisplayorder   <memdiag>
timeout             30

Windows Boot Loader
-----
identifier          <current>
device              partition=C:
path                \Windows\system32\winload.exe
description         Windows 7
locale              en-US
inherit             <bootloadersettings>
recoverysequence    <90a04e38-ff72-11e0-a99a-90004edaeb24>
recoveryenabled     Yes
osdevice            partition=C:
systemroot          \Windows
resumeobject        <51963f06-f5c3-11e0-8fdf-9e53478eceb5>
nx                  AlwaysOn
hypervisorlaunchtype Off

C:\Windows\system32>
```

Yes – I have turned on VT and XD in BIOS.
Verification that BIOS is set for Virtualization.



Installation fails with a generic error. See log file attached separately

