

# Intel® vPro™ Technology

How To Purchase and Install Go Daddy\* Certificates for  
Intel® AMT Remote Setup and Configuration

# Revision History

Revision	Revision History	Date
1.0	First release.	August 17, 2012
1.1	Added steps to install intermediate certificate.	August 22, 2012
1.2	Added steps to verify thumbprint; clarified the multi-domain certificates; changed recommendation for key length to only 2048 bits.	September 17, 2012
1.3	Added section on how to verify the certificate.	September 19, 2012

INFORMATION IN THIS DOCUMENT IS PROVIDED IN CONNECTION WITH INTEL PRODUCTS. NO LICENSE, EXPRESS OR IMPLIED, BY ESTOPPEL OR OTHERWISE, TO ANY INTELLECTUAL PROPERTY RIGHTS IS GRANTED BY THIS DOCUMENT. EXCEPT AS PROVIDED IN INTEL'S TERMS AND CONDITIONS OF SALE FOR SUCH PRODUCTS, INTEL ASSUMES NO LIABILITY WHATSOEVER AND INTEL DISCLAIMS ANY EXPRESS OR IMPLIED WARRANTY, RELATING TO SALE AND/OR USE OF INTEL PRODUCTS INCLUDING LIABILITY OR WARRANTIES RELATING TO FITNESS FOR A PARTICULAR PURPOSE, MERCHANTABILITY, OR INFRINGEMENT OF ANY PATENT, COPYRIGHT OR OTHER INTELLECTUAL PROPERTY RIGHT.

A "Mission Critical Application" is any application in which failure of the Intel Product could result, directly or indirectly, in personal injury or death. SHOULD YOU PURCHASE OR USE INTEL'S PRODUCTS FOR ANY SUCH MISSION CRITICAL APPLICATION, YOU SHALL INDEMNIFY AND HOLD INTEL AND ITS SUBSIDIARIES, SUBCONTRACTORS AND AFFILIATES, AND THE DIRECTORS, OFFICERS, AND EMPLOYEES OF EACH, HARMLESS AGAINST ALL CLAIMS COSTS, DAMAGES, AND EXPENSES AND REASONABLE ATTORNEYS' FEES ARISING OUT OF, DIRECTLY OR INDIRECTLY, ANY CLAIM OF PRODUCT LIABILITY, PERSONAL INJURY, OR DEATH ARISING IN ANY WAY OUT OF SUCH MISSION CRITICAL APPLICATION, WHETHER OR NOT INTEL OR ITS SUBCONTRACTOR WAS NEGLIGENT IN THE DESIGN, MANUFACTURE, OR WARNING OF THE INTEL PRODUCT OR ANY OF ITS PARTS.

Intel may make changes to specifications and product descriptions at any time, without notice. Designers must not rely on the absence or characteristics of any features or instructions marked "reserved" or "undefined". Intel reserves these for future definition and shall have no responsibility whatsoever for conflicts or incompatibilities arising from future changes to them. The information here is subject to change without notice. Do not finalize a design with this information.

The products described in this document may contain design defects or errors known as errata which may cause the product to deviate from published specifications. Current characterized errata are available on request.

Contact your local Intel sales office or your distributor to obtain the latest specifications and before placing your product order.

Copies of documents which have an order number and are referenced in this document, or other Intel literature, may be obtained by calling 1-800-548-4725, or go to: <http://www.intel.com/design/literature.htm%20>

Intel® vPro™ Technology is sophisticated and requires setup and activation. Availability of features and results will depend upon the setup and configuration of your hardware, software and IT environment. To learn more visit: <http://www.intel.com/technology/vpro>.

Intel® Active Management Technology (Intel® AMT) requires activation and a system with a corporate network connection, an Intel® AMT-enabled chipset, network hardware and software. For notebooks, Intel AMT may be unavailable or limited over a host OS-based VPN, when connecting wirelessly, on battery power, sleeping, hibernating or powered off. Results dependent upon hardware, setup and configuration. For more information, visit [Intel® Active Management Technology](#).

Intel®, the Intel logo, Intel® AMT, and Intel® vPro are trademarks of Intel Corporation in the U.S. and/or other countries.

\*Other names and brands may be claimed as the property of others.

Microsoft Windows\* operating system screenshots used with permission from Microsoft.

Go Daddy\* web screenshots used with permission from Go Daddy.

Copyright © 2012 Intel Corporation. All rights reserved.

# Contents

---

- 1 Preface .....1**
  - 1.1 Document Scope ..... 1
  - 1.2 Supported Intel® AMT Versions..... 1
  - 1.3 Intended Audience..... 1
  - 1.4 Prerequisites ..... 2
- 2 Purchase a Go Daddy\* Certificate .....3**
  - 2.1 Create Certificate Signing Request (CSR) ..... 3
- 3 Send the Certificate Request to Go Daddy\* .....9**
- 4 Prepare the Certificate .....21**
- 5 Install the Certificate .....23**
  - 5.1 Install the Intermediate Certificate ..... 23
  - 5.2 Install the pfx Certificate ..... 25
  - 5.3 Verify the Certificate Chain ..... 27
- 6 Verify that it Works .....31**



# 1 Preface

---

Intel® Active Management Technology (Intel® AMT) must be setup and configured before you can use the remote manageability and security features. One method is to install Intel Setup and Configuration Software (Intel SCS) and then use *remote configuration*. Remote configuration uses Transport Layer Security (TLS) between the Intel SCS Remote Configuration Server and the remote PCs with Intel AMT firmware. The Intel AMT firmware is pre-loaded with TLS certificate thumbprints from six different certificate vendors so all you need to do is install a third-party certificate on the Remote Configuration Server. This document includes step-by-step instructions on how to purchase and install a Go Daddy\* certificate that will match the pre-installed Go Daddy\* thumbprint and allow you to use remote configuration and maintenance using Intel SCS.

## 1.1 Document Scope

This document does not include specific steps to install the Go Daddy certificate on other management consoles. For consoles that do not use Intel SCS 8, please refer to the vendor's documentation for installing the certificate. The steps used to purchase the certificate are the same for all management consoles.

## 1.2 Supported Intel® AMT Versions

The Go Daddy\* Class 2 CA certificates are supported in the following versions of Intel AMT:

- 2.2.20, 2.2.30
- 2.60 and later

Go Daddy\* certificates are not supported on the following versions:

- 2.5.5
- 2.5.6
- 2.5.7

## 1.3 Intended Audience

This document is intended for Information Technology (IT) professionals who will be purchasing and installing the TLS certificates.

Readers should have a basic understanding of their IT infrastructure, especially Microsoft\* Internet Information Service, the Microsoft Management Console, and a basic familiarity with TLS certificates.

## 1.4 Prerequisites

The Intel SCS User Guide provides information on the prerequisites for using the remote configuration service. Before starting this process, you should have the following:

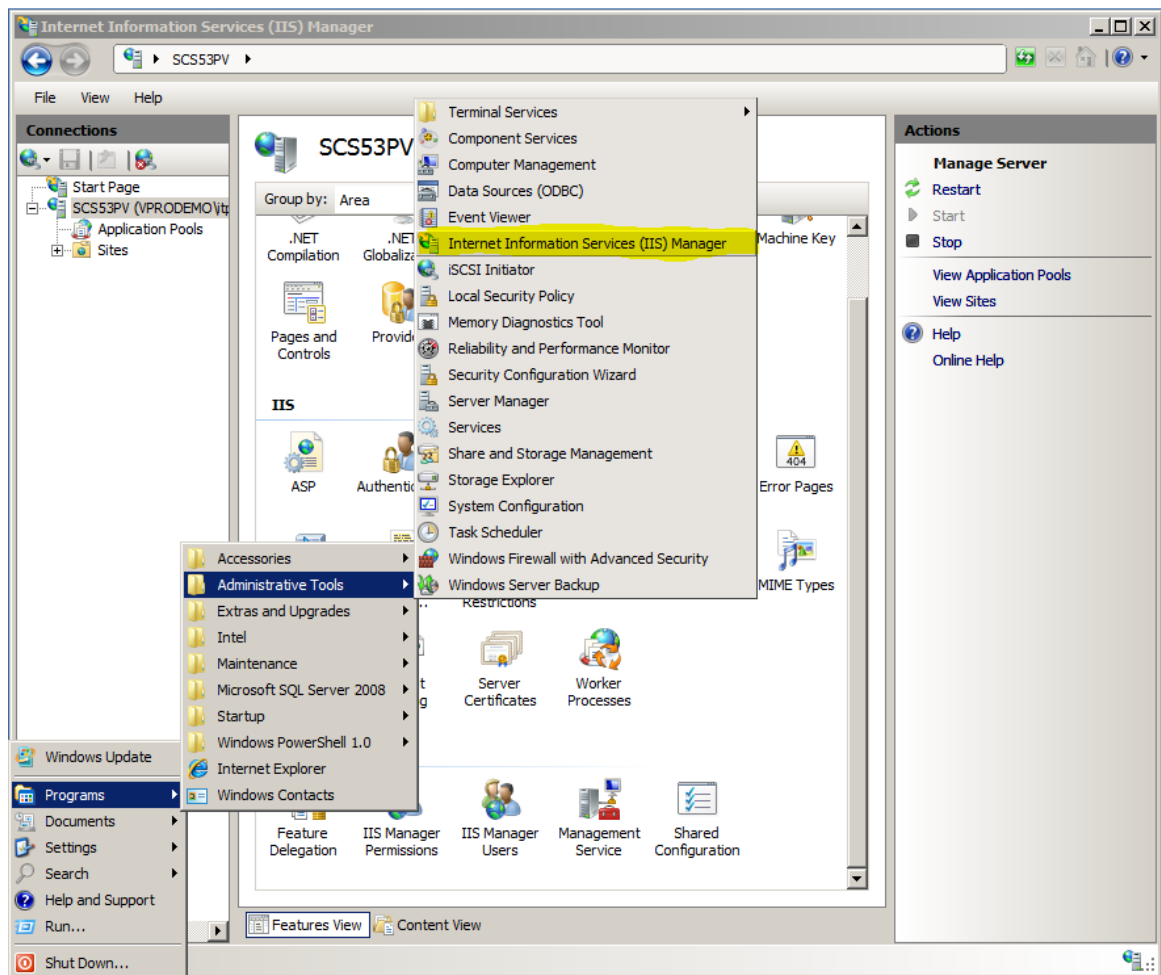
- Intel SCS Remote Configuration Service installed on a supported Microsoft\* operating system
- One or more domain names for your network (Microsoft\* Workgroups are not supported)
- Microsoft\* Internet Information Service (IIS) running on the server that is hosting the remote configuration service
- Account permissions to install the certificate

## 2 Purchase a Go Daddy\* Certificate

The following instructions were captured using Microsoft\* Internet Information Services (IIS) for Windows\* Server 2008 R2.

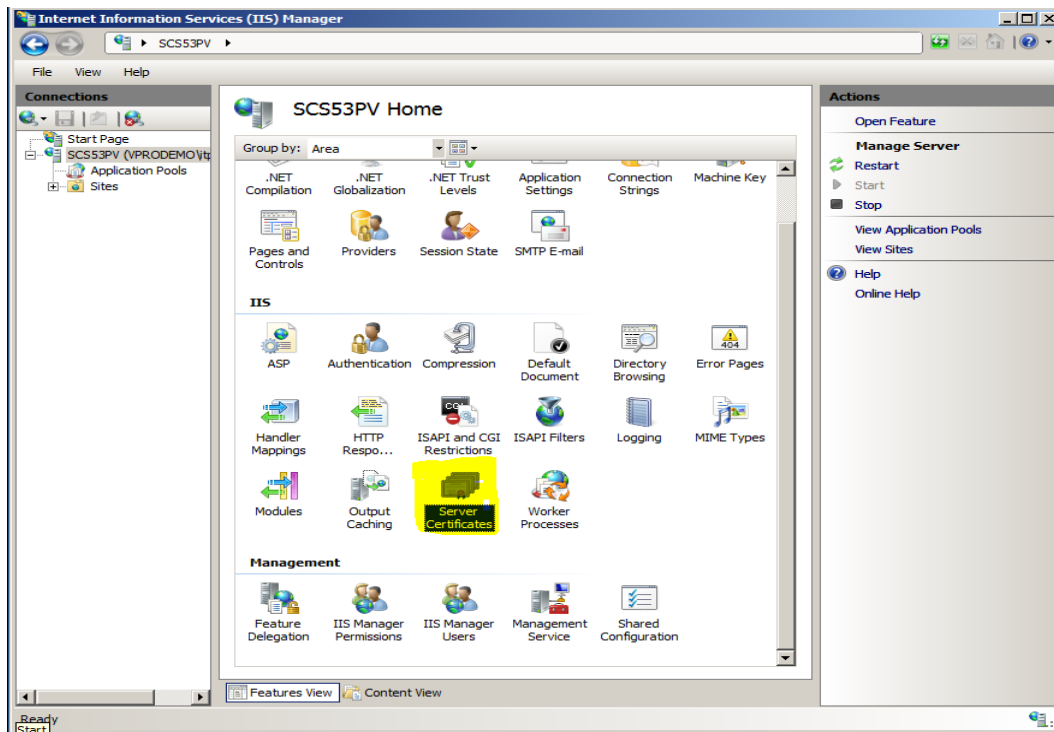
### 2.1 Create Certificate Signing Request (CSR)

1. On your Intel SCS remote configuration server, open Programs→Administrative Tools→**Internet Information Services (IIS) Manager**.



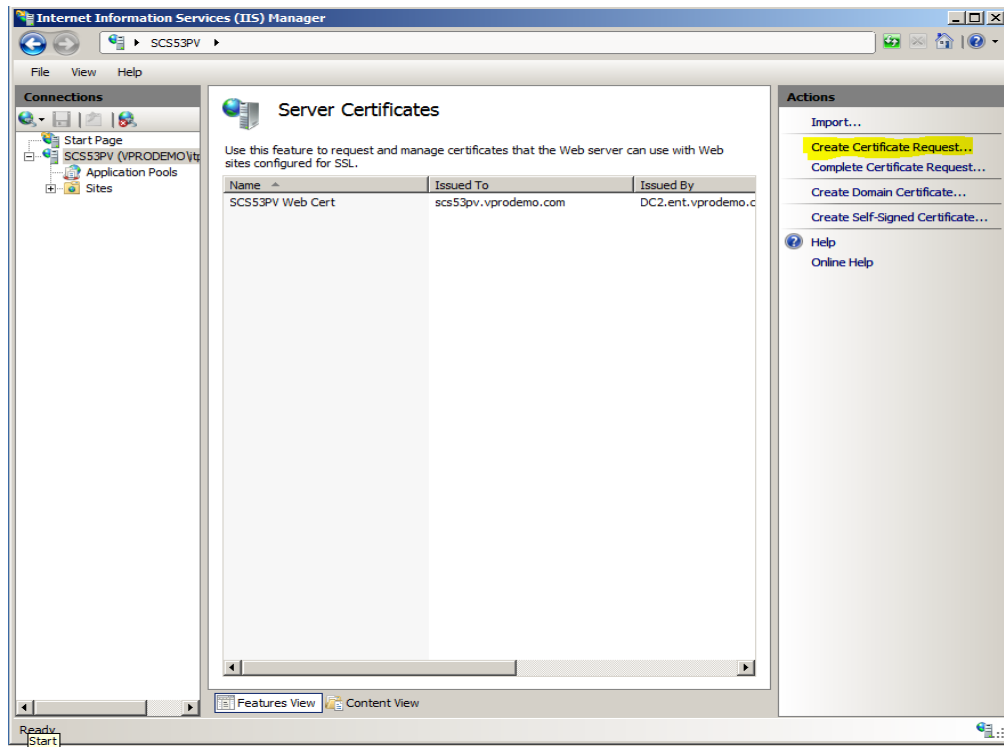
## Purchasing Go Daddy\* Certificates for Intel® AMT Remote Setup and Configuration

2. In the Internet Information Services (IIS) Manager, open the **Server Certificate** icon.





3. Choose **Create Certificate Request...** from the Actions menu.



4. Fill-in the **Distinguished Name Properties** form:
  - **Common Name:** The common name or CN, for standard certificates, is the RCS server hostname plus a domain suffix. To determine if the certificate is valid, the client compares the domain portion of the Common Name to the value returned by DHCP option 15, or, if set, to the Secure DNS Suffix or Provisioning Server FQDN value set in the client's MEBX. For help in understanding the rules for determining if the two values match, and support for 2<sup>nd</sup> and 3<sup>rd</sup> level domains in each version of Intel AMT, refer to the [Domain Suffix Guide for Intel® AMT Remote Configuration Process](#). If you are purchasing a wildcard certificate then you can use one certificate to span different branches in the domain forest. For wildcard certificates, use an asterisk followed by a domain suffix in the CN.

**Example 1** (CN=RCS Server FQDN):

In this example, assume that the DHCP Option 15 has been set to "vprodemo.com," and that you did not set the Secure DNS Suffix or the Provision Server FQDN values in the client's MEBX.

Then, if your Remote Configuration Service (RCS) is running on SCS53PV.vprodemo.com, set CN=SCS53PV.vprodemo.com.

## Purchasing Go Daddy\* Certificates for Intel® AMT Remote Setup and Configuration

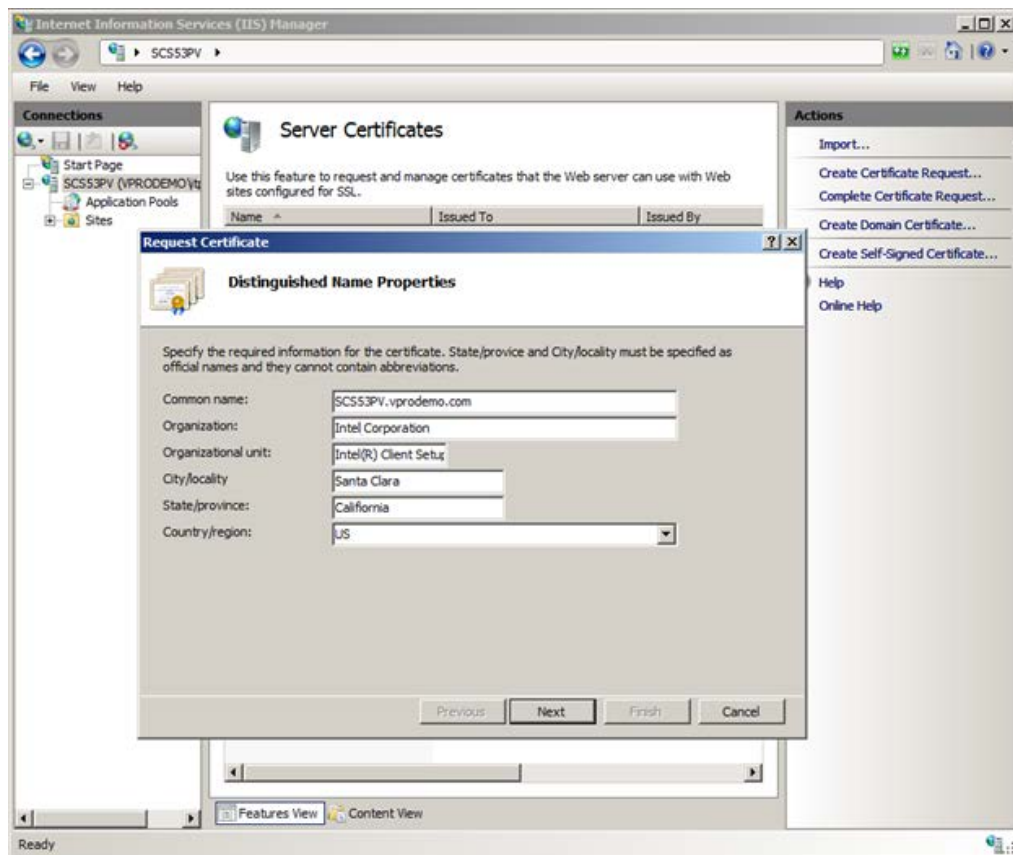
You can verify the DHCP Option 15 setting by running the SCSDiscovery utility (provided with Intel SCS) on the client. The DHCP Option 15 setting is called the OSSpecificDNSSuffix.

### Example 2 (CN=RCS server host with client DNS Suffix)

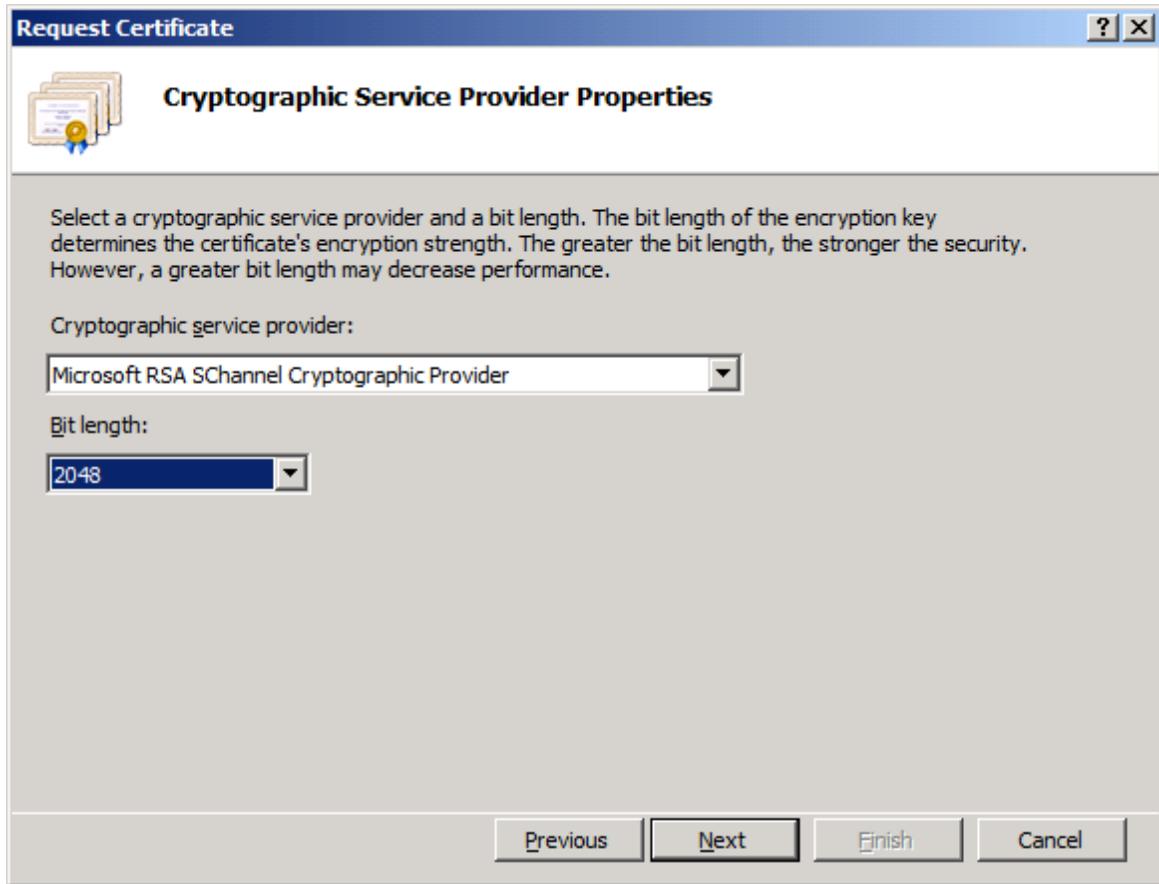
In this example, the DHCP option 15 value has been set to “vprodemo.edu” for the environment. If your Remote Configuration Service is running on myRCS.vprodemo.com, set the certificate CN=myRCS.vprodemo.edu.

- **Organization:** The name of the organization that is requesting the certificate and owns the domain
- **Organizational Unit:** (not used by Go Daddy)
- **City:** The requesting organization’s city
- **State:** The requesting organization’s state
- **Country:** The requesting organization’s country code

Choose **Next**.

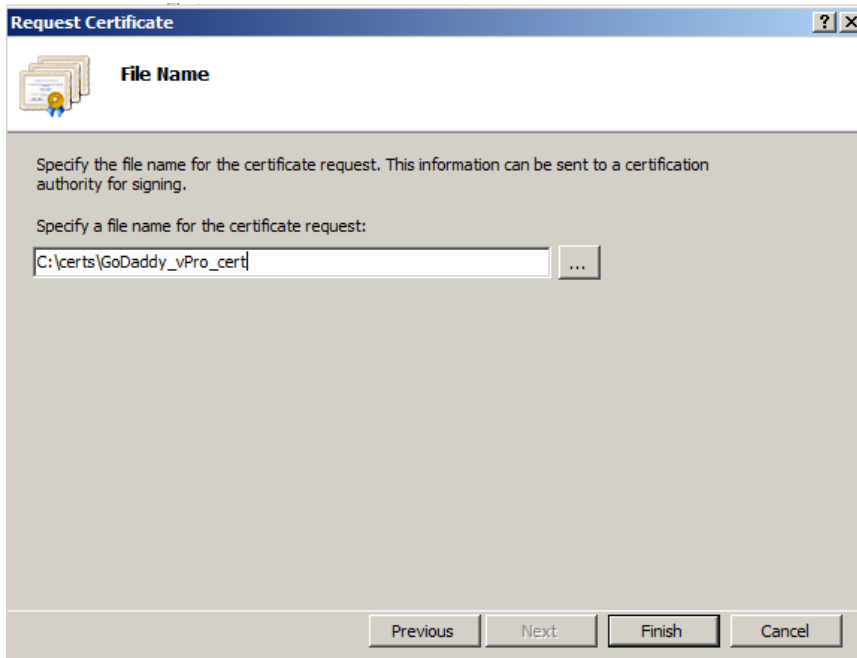


5. Leave the Cryptographic Service Provider set to **Microsoft RSA SChannel Cryptographic Provider** and select **2048** as your key Bit length. Choose **Next**.

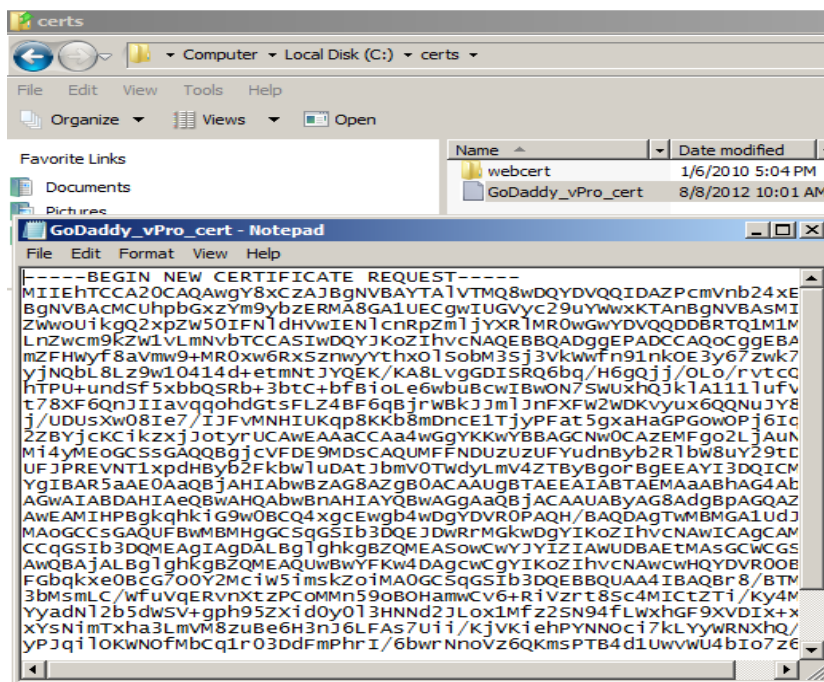


## Purchasing Go Daddy\* Certificates for Intel® AMT Remote Setup and Configuration

- Choose the “...” button to select a location. Enter a file name to store the certificate request and then choose **submit**. Click **Finish**.



- This file, GoDaddy\_vPro\_cert in our example, will be used to submit your request to Go Daddy for an Intel AMT Setup and Configuration certificate. You can open the file in Notepad to view encrypted certificate request.



## 3 Send the Certificate Request to Go Daddy\*

1. Setup a Go Daddy\* account ([link](#)).
2. Go to the Go Daddy\* web site: [www.godaddy.com](http://www.godaddy.com)
3. Login to your Go Daddy\* account.

My Account Hi, Minh | Log Out 24/7 Support: (480) 505-8877 ? Help Hablamos Español

All Products Cart Domain Names Websites & Hosting Web Tools Search

**HOT FOR TECHNOLOGY?** Click

**Your new website starts with a domain.**

Search for a new domain .com GO

Over 53 million domain names registered. Bulk Domain Search

**DANICA PATRICK**  
Racing Star,  
Go Daddy Girl®  
& Customer

**Go Daddy Inside-Out**  
Karl Otter

**\$12.99\***  
.COM & .CO domains

**FREE .INFO**  
with .COM  
or .CO Details

**Domains Deals**  
.BIZ \$5.99/yr\* - Save 60%  
.ORG \$6.99/yr\* - Save 58%  
.ME \$9.99/yr - Save 50%  
[All domain pricing](#)

**Transfer your domain**  
Risk-free guarantee

All domains include  
Free InstantPage®

More about domain names ▾

Click here for product disclaimers and legal policies.

**Go Daddy Global**

Language: English Country: United States Currency: United States Dollar \$ (Transactional)

**Account Manager**  
My Account  
My Renewals  
My Upgrades  
Account Settings  
Customer Information  
Order History  
Create Account

**Shopping**  
Domain Search  
Product Catalog  
Go Daddy Gear  
Go Daddy Mobile  
Deals of the Day

**Resources**  
Webmail  
WHOIS search  
ICANN Confirmation  
Affiliates  
Follow & Fan Us  
Legal  
Commercial Contests  
Site Map

**Support**  
Telephone Support & Sales  
Product Support  
Discussion Forums  
User Groups  
Submit Support Ticket  
Site Suggestions  
Report Abuse  
Go Daddy Scoop

**About Go Daddy**  
About Us  
News Releases  
Careers  
Marketing Opportunities  
Customer Testimonials  
Security Center  
.ME Scholarship  
Round Up for Charity  
Inside Go Daddy  
Go Daddy Tech Center

**Mobile**  
Go Daddy, on the GO!  
iPhone Application  
iPad Application  
Android Application  
BlackBerry Application  
Visit GoDaddyMobile.com

**Find Us On...**  
f t g+

**Sign Up for Special Offers**  
Email Address Submit

TRUSTe CERTIFIED PRIVACY ACCREDITED BUSINESS Trustwave PAYPAL VISA MASTERCARD DISCOVER

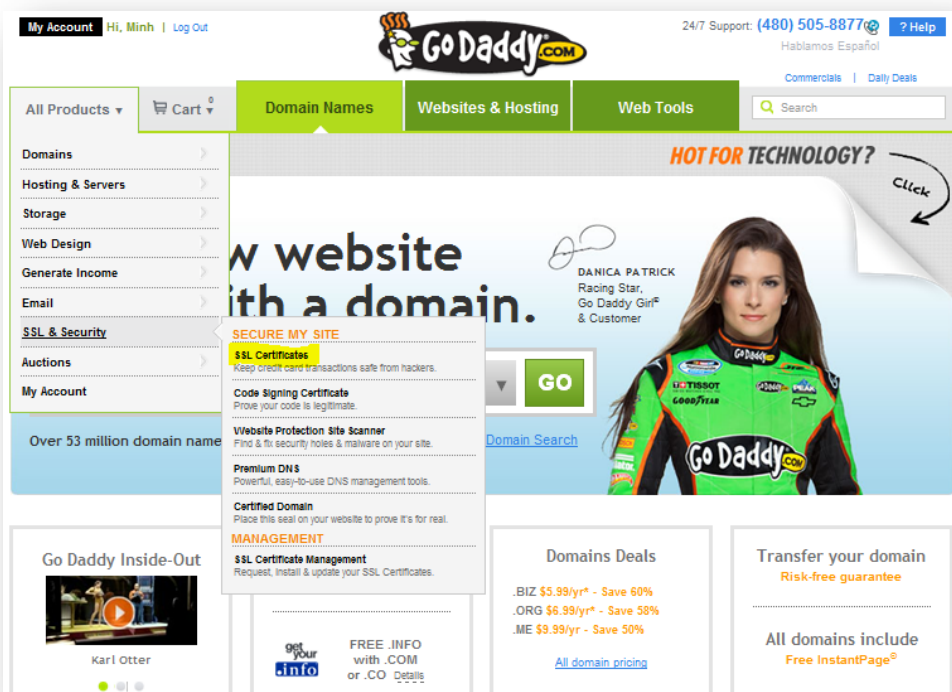
Use of this Site is subject to express Terms of Use. By using this Site, you signify that you agree to be bound by these Terms of Use, which were last revised on August 5, 2011.  
[Legal](#) [Privacy Policy](#)

GoDaddy.com is the world's No. 1 ICANN-accredited domain name registrar for .COM, .NET, .ORG, .INFO, .BIZ and .US domain extensions. Source: RegistrarSTATS.com

Copyright © 1999 - 2012 Go Daddy Operating Company, LLC. All Rights Reserved. D

# Purchasing Go Daddy\* Certificates for Intel® AMT Remote Setup and Configuration

- From the **All Products** drop down box, choose **SSL & Security**, then choose **SSL Certificates**.



5. At the bottom of the page click **“Need an SSL certificate that supports Intel vPro Technology for remote PC management”**.

Plans & Pricing   Compare Plans   Ours vs. Theirs   FAQs   Need Help? Call 24/7. 480.463.8887

Protect transactions and customer data with a SSL Certificate.

- Includes a FREE website Malware Scanner to monitor your site for malicious links inserted by hackers trying to spread worms, viruses and spyware to your visitors.
- Pay up to 90% LESS and get your certificate FAST!
- Encrypts data transferred to and from your site and protects against session hijacking attacks, including Firesheep.
- Secure UNLIMITED servers. Compare that to other Certification Authorities that charge for licensing on each server.
- Enjoy the backing of established industry standards. There is NO TECHNICAL DIFFERENCE between our certificates and any other major Certification Authority.
- 99.9% browser recognition and up to 256-bit encryption.
- Help is always there when you need it. Get industry-best 24/7 service and support!

**Standard SSL**  
\$69.99/year  
Verifies your domain control & secures your site.

Domain validated  
Issued within minutes  
\$10,000 warranty  
Free Malware Scanner

Single Domain - \$69.99/yr  
3 Yrs. \$59.49/yr Save 15%**z**

Multiple Domains UCC - \$89.99/yr  
Ideal for Microsoft Exchange Server®  
Up to 5 domains  
3 Yrs. \$71.99/yr Save 20%**z**

Single Domains with Unlimited Sub Domains (Wildcard) - \$199.99/yr  
3 Yrs. \$179.99/yr Save 10%**z**

Plan Features  
-> 1 certificate protects www.securemywebsites.net AND securemywebsites.net  
-> 24/7 live support  
-> SSL Installation Tool  
-> Site seal options

**Premium SSL**  
\$99.99/year  
Most extensive validation. Ideal for eCommerce.

Domain and company validated  
Trusted green browser bar  
Free 1 year Standard SSL  
\$250,000 warranty  
Free Malware Scanner and DNSSEC

Single Domain - \$99.99/yr  
2 Yrs. \$74.99/yr Save 25%**z**  
Available for select countries

Add to Cart

Plan Features  
-> 1 certificate protects www.securemywebsites.net AND securemywebsites.net  
-> 24/7 live support  
-> SSL Installation Tool  
-> Site seal options

Need an SSL certificate that supports Intel vPro technology for remote PC management? Check out our Deluxe Certificate. Exclusive offer for Open Source projects – get a FREE 1 year Standard SSL Certificate! Apply now!

6. From the **Deluxe SSL** column, choose either **Single Domain** or **Single Domain with Unlimited Sub Domains (Wildcard)**. (Note: do not select the *Multiple Domains UCC* option.)

Note: the certificate it will *not* have the OU of “Intel(R) Client Setup Certificate”. It will be issued with the supported OID 2.16.840.1.113741.1.2.3 (this is the unique Intel AMT OID).


## Purchasing Go Daddy\* Certificates for Intel® AMT Remote Setup and Configuration

Plans & Pricing
Compare Plans
Ours vs. Theirs
FAQs

Need Help? Call 24/7.  
480.463.8887

### Protect transactions and customer data with a SSL Certificate.

- ✓ Includes a **FREE website Malware Scanner** to monitor your site for malicious links inserted by hackers trying to spread worms, viruses and spyware to your visitors.
- ✓ Pay up to **90% LESS** and get your certificate **FAST!**
- ✓ **Encrypts data** transferred to and from your site and protects against session hijacking attacks, including Firesheep.
- ✓ **Secure UNLIMITED servers.** Compare that to other Certification Authorities that charge for licensing on each server.
- ✓ Enjoy the backing of established industry standards. There is **NO TECHNICAL DIFFERENCE** between our certificates and any other major Certification Authority.
- ✓ **99.9%** browser recognition and up to **256-bit** encryption.
- ✓ Help is always there when you need it. **Get industry-best 24/7 service and support!**
- ✓ **Securely manage remote PCs** that use the Intel vPro® network with our Deluxe high-assurance SSL certificate.



#### Standard SSL

\$69.99/year

Verifies your domain control & secures your site.

**Domain validated**  
**\$10,000 warranty**  
 Issued **within minutes**  
**Free Malware Scanner**


Single Domain - \$69.99/yr  
 3 Yrs: \$59.49/yr Save 15%‡

Multiple Domains UCC - \$89.99/yr  
**Ideal for Microsoft Exchange Server®**  
 Up to 5 domains  
 3 Yrs: \$71.99/yr Save 20%‡

Single Domains with Unlimited Sub Domains (Wildcard) - \$199.99/yr  
 3 Yrs: \$179.99/yr Save 10%‡

**Plan Features**

- > 1 certificate protects www.securemywebsites.net AND securemywebsites.net
- > 24/7 live support
- > SSL Installation Tool
- > Site seal options



#### Deluxe SSL

\$89.99/year

High assurance verifies your domain & company.

**Domain and company validated**  
**\$150,000 warranty**  
**Supports Intel vPro® technology** to securely manage remote PCs.  
**Free Malware Scanner**

Single Domain - \$89.99/yr  
 3 Yrs: \$66.66/yr Save 25%‡


Multiple Domains UCC - \$199.99/yr  
 Up to 5 domains  
 3 Yrs: \$159.99/yr Save 20%‡

Single Domains with Unlimited Sub Domains (Wildcard) - \$299.99/yr  
 3 Yrs: \$239.99/yr Save 20%‡

Add to Cart

**Plan Features**

- > 1 certificate protects www.securemywebsites.net AND securemywebsites.net
- > 24/7 live support
- > SSL Installation Tool
- > Site seal options



7. Select how long you would like this certificate to be valid before having to renew this certificate from the drop-down list below your selection of Single Domain or Single Domain with Unlimited Sub Domains..

In addition, the free *Intel® Remote Configuration Certificate Utility* can help you select the right certificate for your environment:

<http://communities.intel.com/docs/DOC-2734#cf>

8. Choose **Add to Cart**.



## Purchasing Go Daddy\* Certificates for Intel® AMT Remote Setup and Configuration

9. At the “customize your order” section I chose “**No Thanks**” for the added features.

**Select Your Hosting Plan!** [Help Me Choose](#)

- The world's largest hosting provider.<sup>2</sup>
- No ad banners or pop-ups, no set-up fees and no annual commitment.
- All hosting includes FREE software, forums, blogging, photo galleries and more.
- Affordable, reliable and ideal for most individuals and small businesses.
- Unlimited bandwidth means you never have to worry about overage fees.
- [View plan details](#) - Buy more months now and **lock in your SAVINGS** for years to come!

**Add Economy:** 10,000 MB Disk Space, 100 Email Accounts, 50 Forwarding accounts, 10 MySQL Databases  
12 mos. Economy - Linux \$4.74/mo Save 5%‡

▶  **Plans from \$4.24/mo — Save 15%**

**Add Deluxe:** 150,000 MB Disk Space, 500 Email Accounts, Unlimited Forwarding accounts, 25 MySQL Databases, SQL Server 2000, [Free Linux and Windows Items](#)  
12 mos. Deluxe - Linux \$6.64/mo Save 5%‡

**Add Ultimate:** Unlimited Space\*, 1000 Email Accounts, Unlimited Forwarding accounts, 50 MySQL Databases  
12 mos. Ultimate - Linux \$9.49/mo Save 5%‡  
**Includes FREE SSL, \$69.99/yr value!††**

‡ Annual discounts available on NEW purchases only.  
\* Plan provides unlimited storage subject to availability of space on a single clustered server and subject to the terms of service in your Hosting Service Agreement. Limitations apply to other plan features.  
†† SSL certificate is free only for the initial hosting plan term purchased, after which it will automatically renew at the then-current rate.  
† Works on Windows 9x, IE5.5 or later and Firefox.  
‡ Largest worldwide mass-market hosting provider by annual revenue. Source Tier1 Research, Mass-Market Hosting Report-Winter 2011.

## Purchasing Go Daddy\* Certificates for Intel® AMT Remote Setup and Configuration

10. At the Checkout screen, you should see the **Deluxe SSL** certificate (other options may vary if you selected additional items to purchase). Review your order and choose **Continue to Checkout**.

Log In or Create Account 24/7 Support: (480) 505-8877 ? Help Hablamos Español

All Products Cart Domain Names Websites & Hosting Web Tools Search

Cart Login Payment Confirmation

Ready to checkout, Minh Pham? Not Minh, [click here](#)

Add a domain to my order:  .com

The customer information on this order will be used as the registrant/contact information and will be listed in the public Whois directory. This information can be changed in your account after checkout.

**Review Your Shopping Cart:**

Product	Quantity	Rate/Discount Price	Total
Deluxe SSL SKU: 3601-1	1 certificate	\$89.99	\$89.99

Product Details  
Term: 1 Year(s)  Save 17% Instantly! Certify for 2 years.<sup>24</sup>

[Delete](#)

[Top](#) [Empty Cart](#)

**RECOMMENDED Just for You!**

**Search Engine Visibility**  
Increase your search rankings on Google®, Yahoo!® and Bing!®. 12 months just \$1.99/mo - Save 33%!

\*\*\* Click here for offer disclaimer

**Order Summary**

Cart Subtotal: \$89.99  
[Enter Promo or Source Code](#)

Order Total: \$89.99

Round up for Charity. Round your order up and we'll donate the difference of \$0.01 cents to the charity you select. [Details](#)

[Keep Shopping](#)

11. Fill in the appropriate payment information and click **Place Order Now**.

12. You will now see the Order Details. Choose **My Account**.

Log In or Create Account 24/7 Support: (480) 505-8877 ? Help Hablamos Español

All Products Cart Domain Names Websites & Hosting Web Tools Search

**Thank you, Minh! Your order is complete.**  
**SAVE NOW on the special offers below!**

**Order Summary**

[View & Print Receipt](#)

Order #: 452369501  
Total: \$89.99  
Payment: #####0208

[View Account Information](#)

Customer #: 54899167  
Username: mpham1

You are already a Go Daddy Affiliate  
[Earn CASH by sharing your affiliate link with friends now!](#)

**Start Using Your Products**

Setup and manage your products now

Having trouble?  
Call us at (480) 505-8877 or

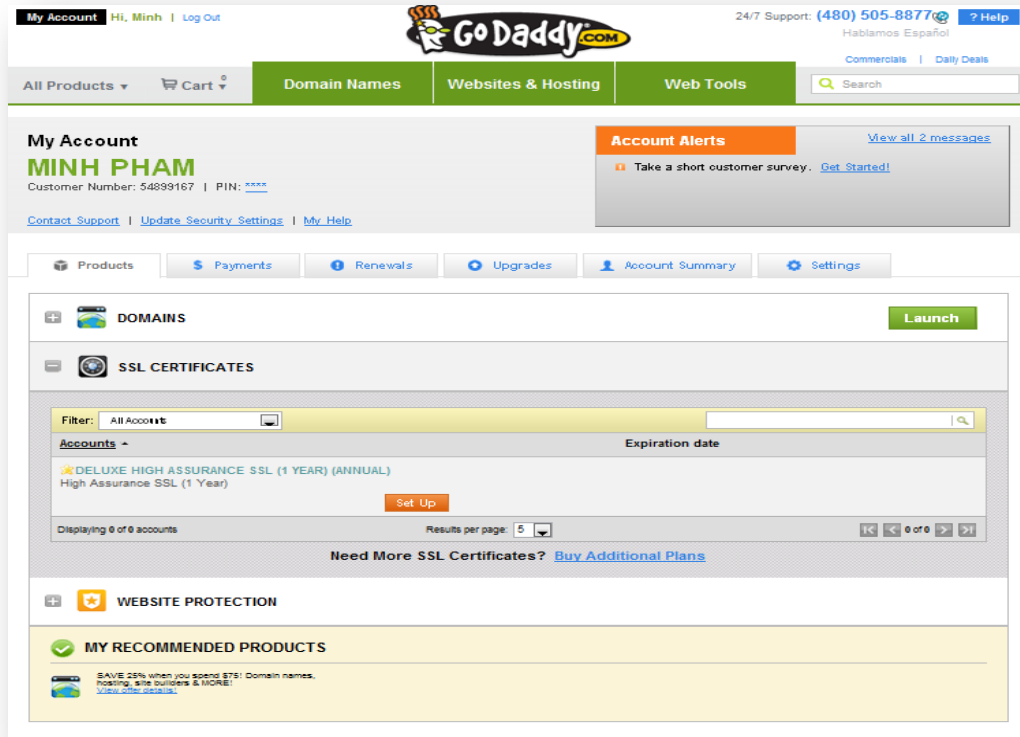
**Important Notices**

You will receive an email confirmation of your purchase at minh.t.pham@intel.com. Any additional account notices will also be sent to this email address.

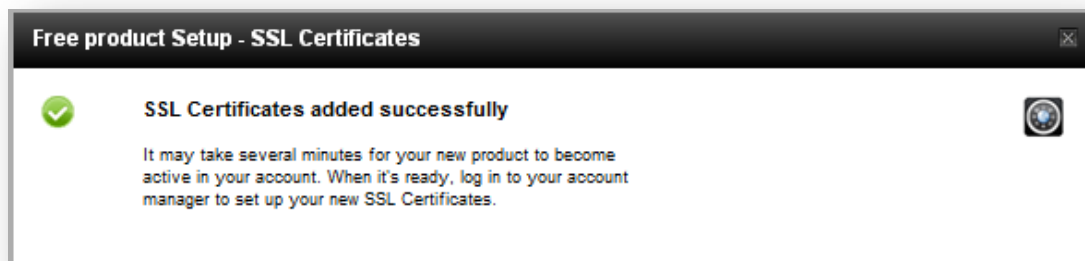
**Keep Shopping and SAVE \$10.00 on your order of \$65.00 or more!\*** [Details](#)

## Purchasing Go Daddy\* Certificates for Intel® AMT Remote Setup and Configuration

13. Under **SSL Certificates** section, choose **Set Up** for the certificate you just purchased.

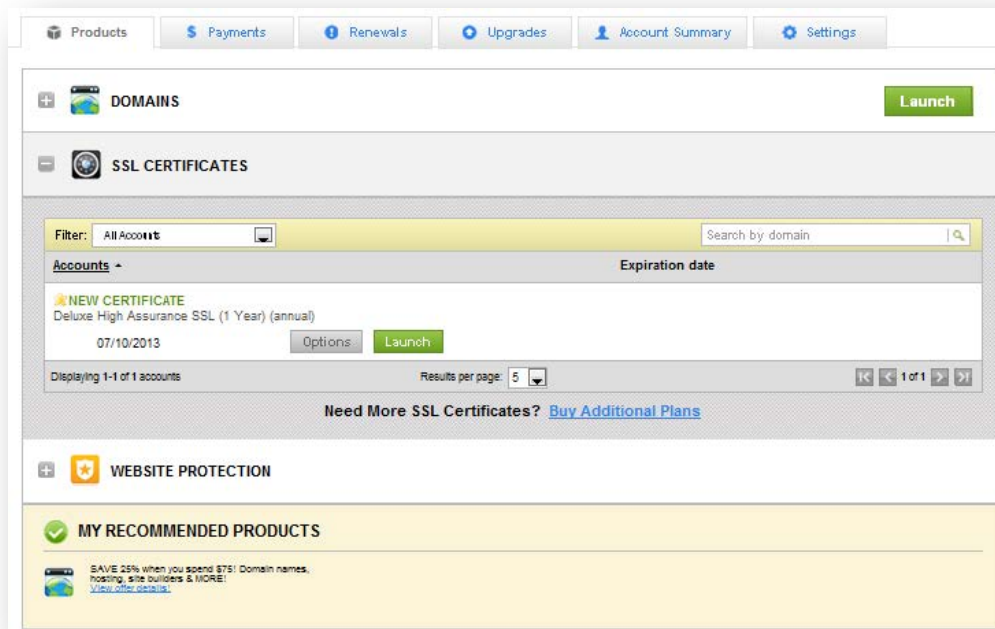


14. You will get a "SSL Certificate added successfully" popup.



## Purchasing Go Daddy\* Certificates for Intel® AMT Remote Setup and Configuration

15. Choose **Launch** to setup your certificate.



16. Choose "Request Certificate" link on the right side of the table.



17. **Paste your CSR** into the available window., then enter the following:

- Certificate issuing organization, select **Go Daddy**
- Choose **Yes** for **Is this certificate for Intel® vPro™?**
- Business type, select **Corporation**

## Purchasing Go Daddy\* Certificates for Intel® AMT Remote Setup and Configuration

The screenshot shows the 'Type' step of the Go Daddy certificate purchase process. The navigation bar includes 'Type', 'Requestor Info', 'Confirmation', and 'What now?'. The 'Business type' section has 'Corporation' selected. The 'Certificate hosting' section has 'Third Party, or Dedicated Server or Virtual Dedicated Server, without Simple Control Panel' selected. A text area contains a CSR request. The 'Certificate issuing organization' is set to 'Go Daddy'. 'Is this certificate for Intel® vPro™?' is set to 'Yes'. 'Next' and 'Cancel' buttons are at the bottom right.

**Business type**

- Corporation
- Individual or Principal Owner without a registered business name

**Certificate hosting**

- Web Hosting, Grid Hosting, WebSite Tonight, Quick Shopping Cart, or Dream Web Site
- Dedicated Server or Virtual Dedicated Server, with Simple Control Panel
- Third Party, or Dedicated Server or Virtual Dedicated Server, without Simple Control Panel

Enter your Certificate Signing Request (CSR) below: [CSR Help](#)

```
hkG9w0DBzAdBgNVHQ4EFgQUpGaFct8hwXLXota7zoHhK92UCEcwDQYJKoZIhvcNAQEFBQADggEBALrxxh1QpO6JTt1t7qtG4jji5TENStJnaIukSL/spEMNB4HbrGWd  
u1vFChqeqNKEQ5j3RCSFdiOto6P5XP5lmqxp1g434phgzXgH7u1F9uKVIn41Xfsv  
yMne8T0nYg9rn9Qnrc/w4Unz97IshniXumgY4nPqP2IkVLRxuRMMWoCV2wCcxze  
VMj9BOOTDIWvFdtWmJ2HuCC/E2RAXSb/3CcnWWuSYbR7gWwKWNcXuZrwrp1cYU9  
WnV3DteEzo2srKoKS30p/fMz5rW8rVmP1EHTt2xf1WdbIeGDoF6bsQXzTQYU6hE08  
FNk1OQDVK66bci.z0+jRGFqda29ns7tQ5TIw=  
-----END NEW CERTIFICATE REQUEST-----
```

Certificate issuing organization: [Learn more](#)  
Go Daddy

Is this certificate for Intel® vPro™? [Learn more](#)

- Yes
- No

Next Cancel

Click **Next**

18. Fill out the **Type** page with company information and click **Next**.

19. Verify the items in the **Requestor info** page and click **Next** (some information in the following illustration has been redacted).

The screenshot shows the 'Requestor Info' step of the Go Daddy certificate purchase process. The navigation bar includes 'Type', 'Requestor Info', 'Confirmation', and 'What now?'. The 'Type' step is highlighted in green. The form contains fields for Name, Email, Phone, Company, Division, Address 1, Address 2, City, Country, State, Postal Code, Company Phone, and Phone Billing. A checkbox is checked for 'Organizational contact information same as customer account contact information'. A warrant statement is also checked. 'Back', 'Next', and 'Cancel' buttons are at the bottom.

Organizational contact information same as customer account contact information

Name: \* Mesh Email: \* Phone: \* x

Company: \* Intel Corporation Division:

Address 1: \* 2200 Mission College Blvd. Address 2: City: \* Santa Clara

Country: \* United States State: \* California

Postal Code: \* 95054-1549

Company Phone: \* x Phone Billing: \* Phone in company name

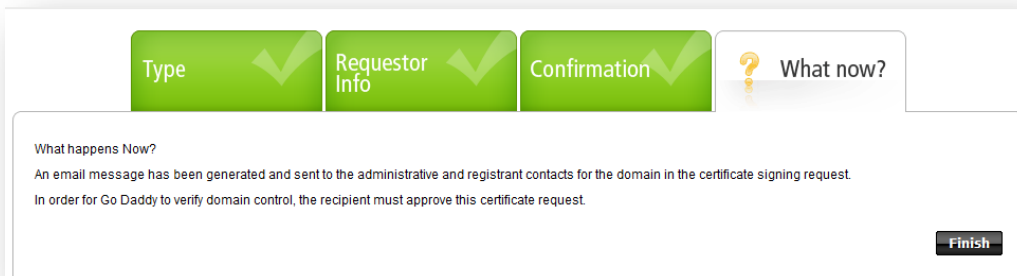
I warrant and represent that I am the registrant, or an authorized representative of the registrant, for the domain name associated with this certificate request.

Back Next Cancel

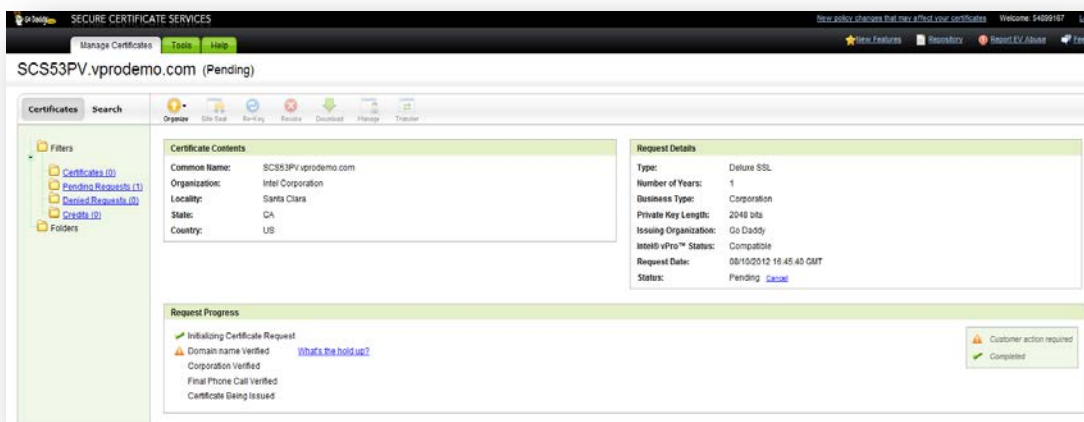
## Purchasing Go Daddy\* Certificates for Intel® AMT Remote Setup and Configuration

20. Confirm the information on the Confirmation page. Choose **Submit**.

21. On the What's Next? page, choose **Finish**.

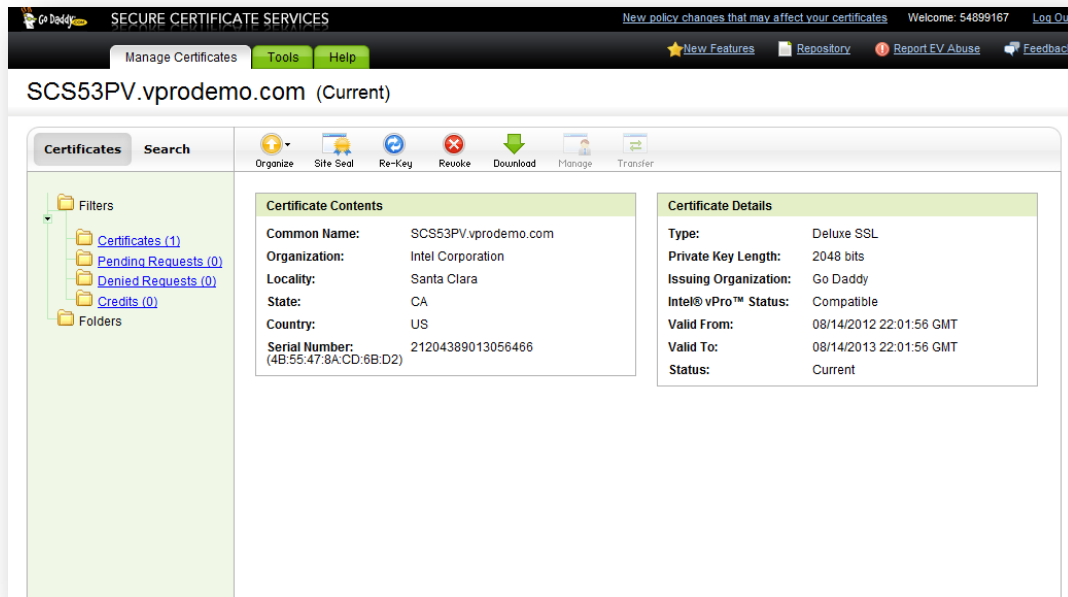


22. In the "Pending Requests" page and before the certificate is issued, there will be a sequence of verifications, Domain name, Corporation, and Final Phone Call.

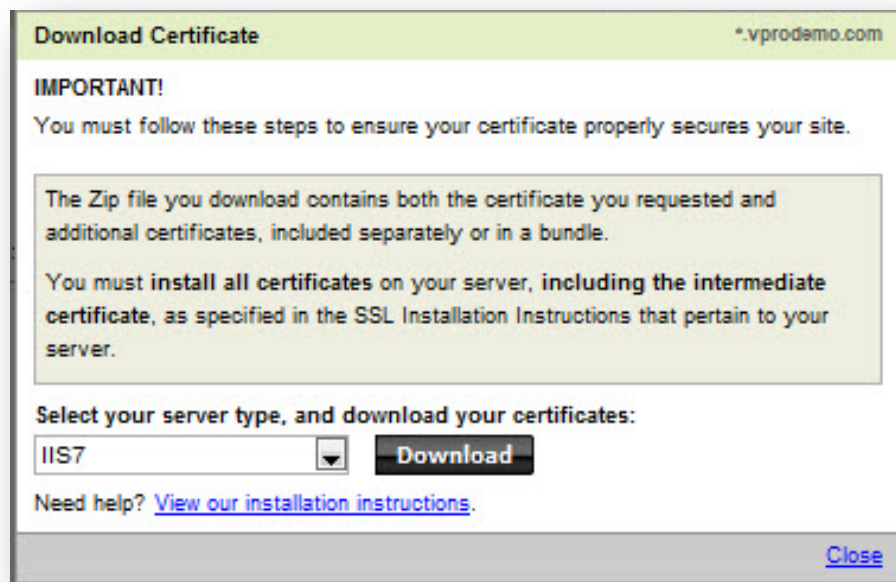


## Purchasing Go Daddy\* Certificates for Intel® AMT Remote Setup and Configuration

23. Once the security verification process has been completed, in your Certificate Details window, you will now see the Deluxe SSL certificate listed. Select the certificate and choose **Download** from the toolbar.



24. From the drop down list, **select server type** (IIS7 in our example), and then choose **Download**.



Save the Zip file on your Remote Configuration Service (RCS) server so you can complete the re-keying of the certificate with the server that generated the CSR.

## **Purchasing Go Daddy\* Certificates for Intel® AMT Remote Setup and Configuration**

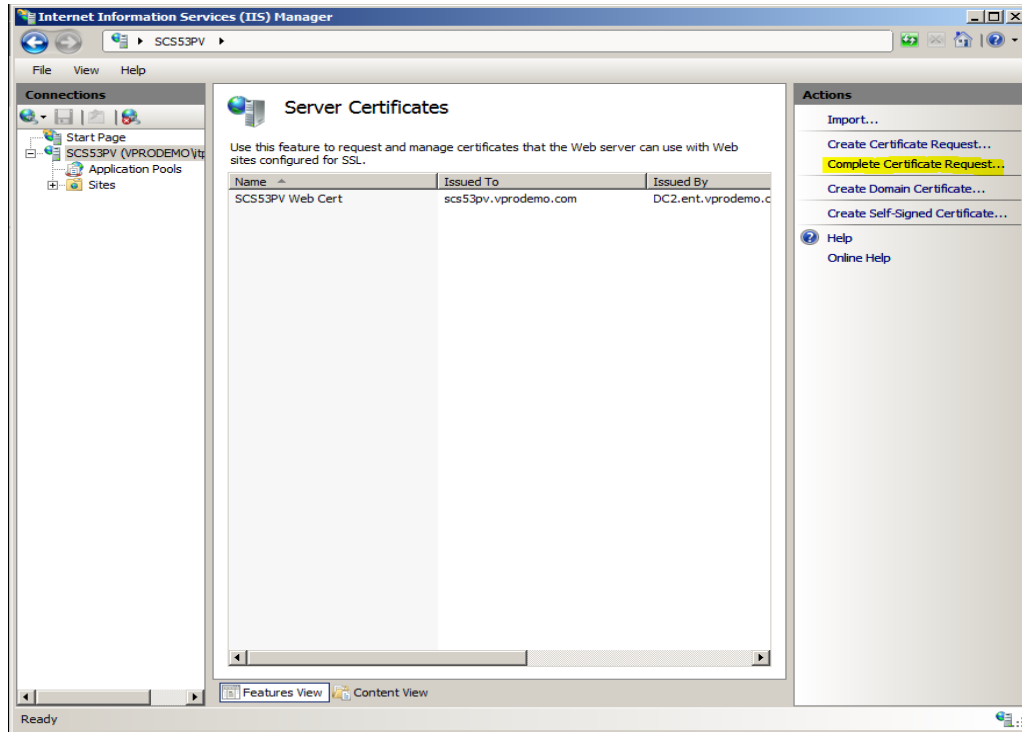
In this example, the zip file contains two files:

- SCS53.PV.vprodemo.com.crt
- Gd\_iis\_intermediates.p7b



## 4 Prepare the Certificate

1. Once you receive the certificate from Go Daddy\*, select the **Complete Certificate Request**.

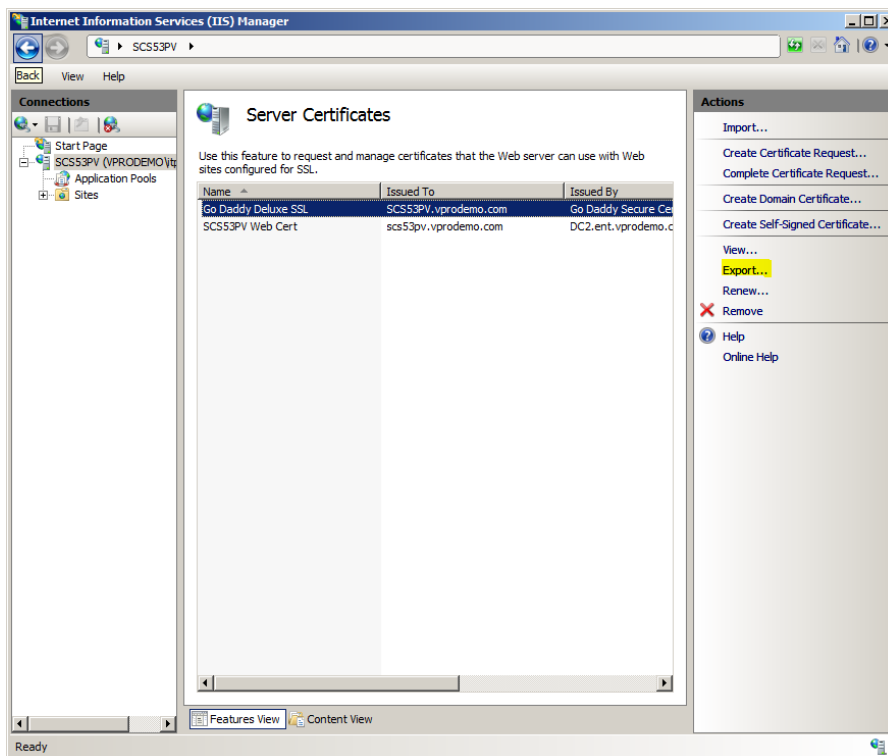


2. Locate the certificate file you received, enter a Friendly name, and choose **OK**.

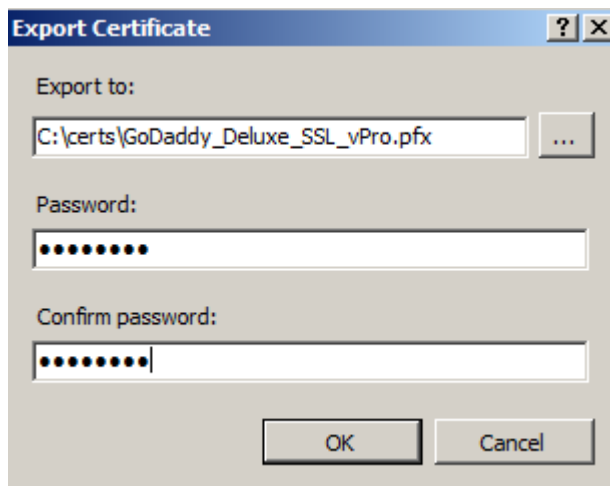


## Purchasing Go Daddy\* Certificates for Intel® AMT Remote Setup and Configuration

3. You will now see the Intel AMT Setup and Configuration Certificate in your IIS Server. Highlight this certificate and choose **Export...** in the Actions menu.



4. Choose a location to export to, then enter a strong password. (This password will protect the private key.) Re-enter the password to confirm the password.



Choose **OK**.

## 5 Install the Certificate

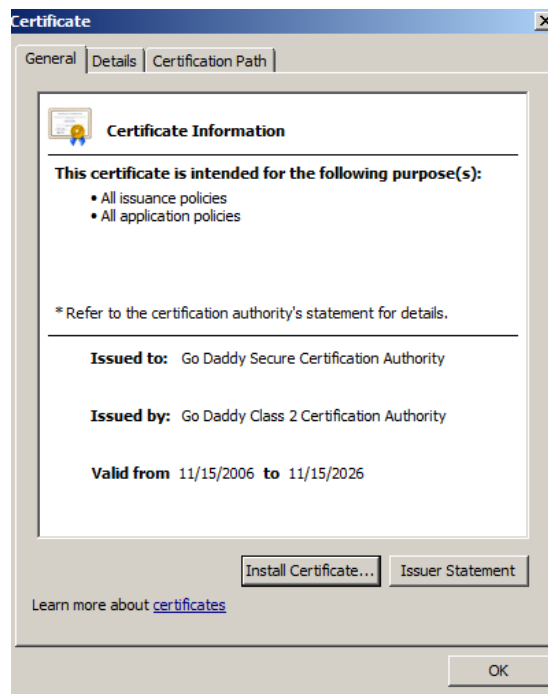
This section will show you how to do the following:

- Install the intermediate certificates (the intermediate certificate forms part of the chain from the certificate that you purchased to the root certificate).
- Install the pfx certificate that you purchased
- Verify that the certificate is installed correctly

### 5.1 Install the Intermediate Certificate

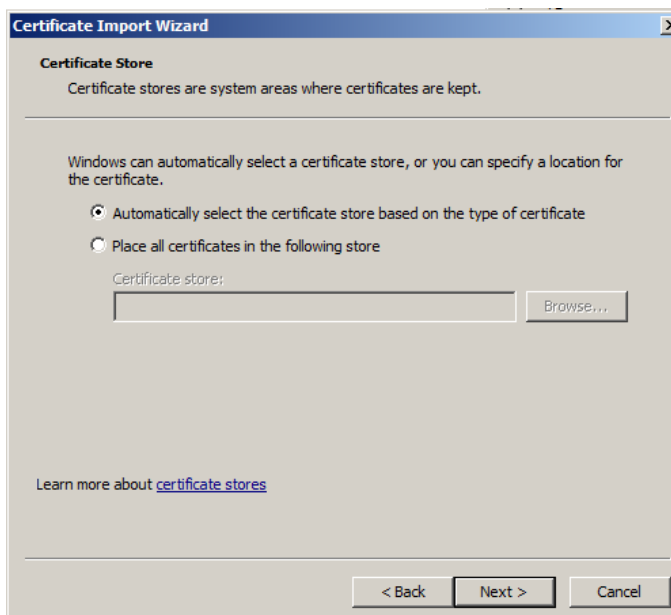
The first step is to import the intermediate certificate into the Current User Intermediate Certificate Authorities Store of the service account for the RCS server.

1. Logon as the service account for the RCS server.
2. Double-click the **gd\_iis\_intermediates.p7b** file where you saved it. Choose **Install Certificate**.

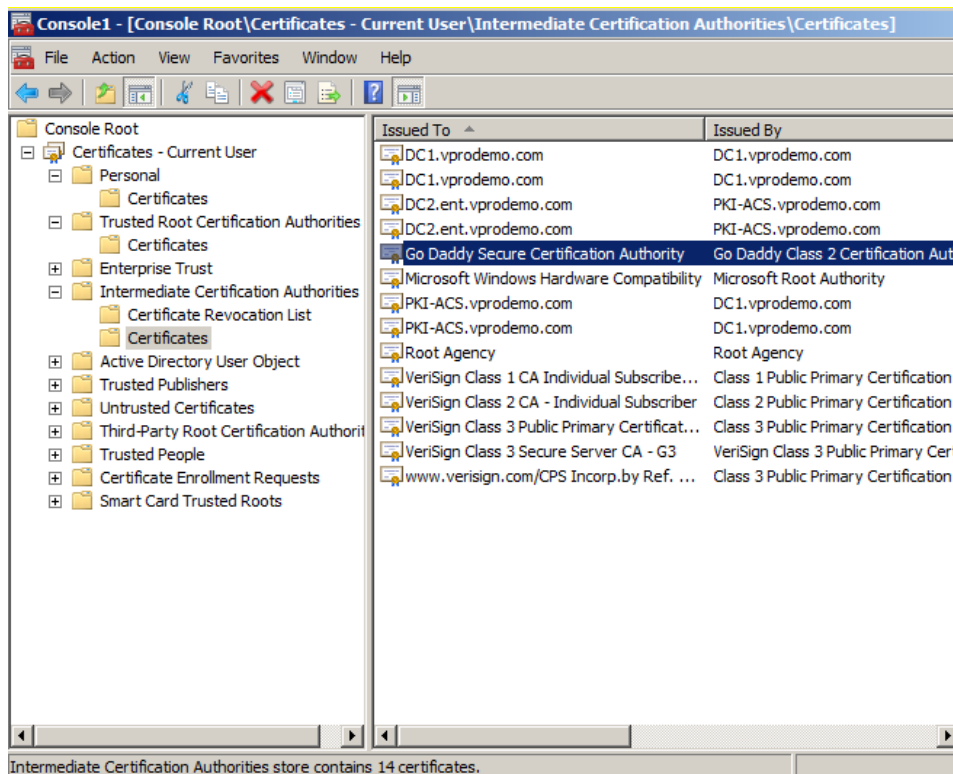


## Purchasing Go Daddy\* Certificates for Intel® AMT Remote Setup and Configuration

- Use the default settings and then choose **Next**.



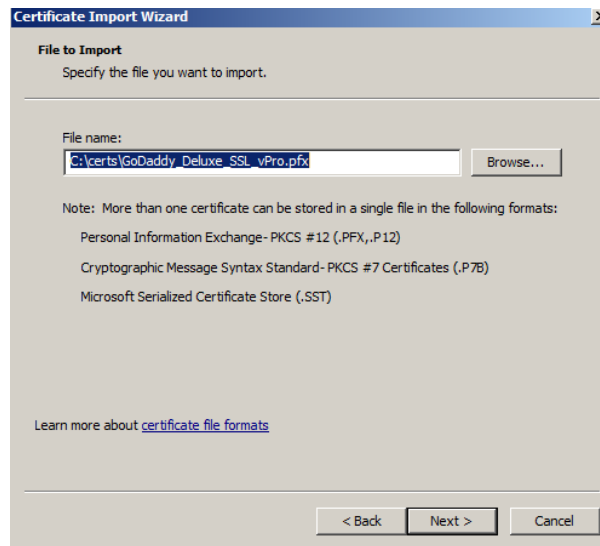
The certificate is now installed in the Intermediate Certificate Authorities store.



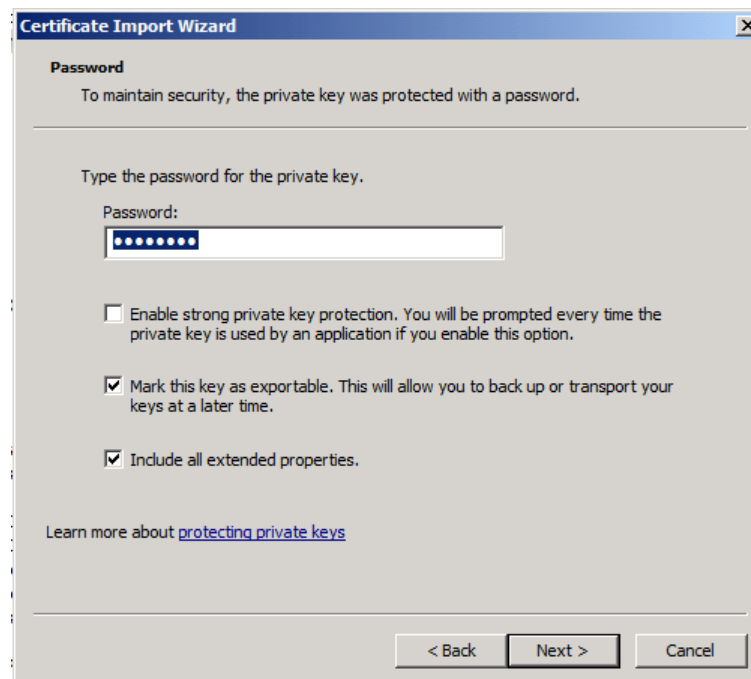
## 5.2 Install the pfx Certificate

Next, the pfx certificate created earlier will be installed and chained to the intermediate certificate that you installed in the previous step. The .pfx certificate will be imported into the **Current User Personal Certificate Store**.

1. Double-click on the .pfx file where you saved it. Choose **Next**.

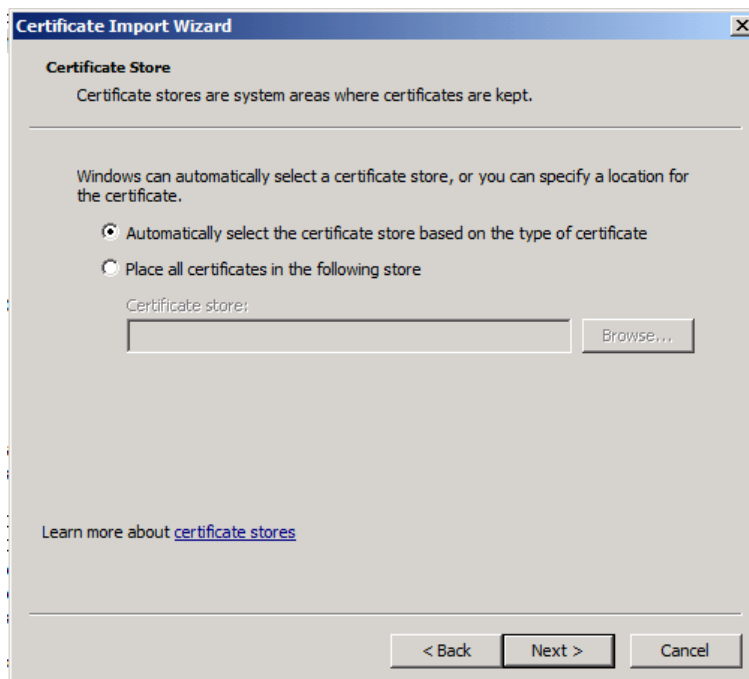


2. Enter in the password and select the **Mark Key as exportable**, and **Include all extended properties**.

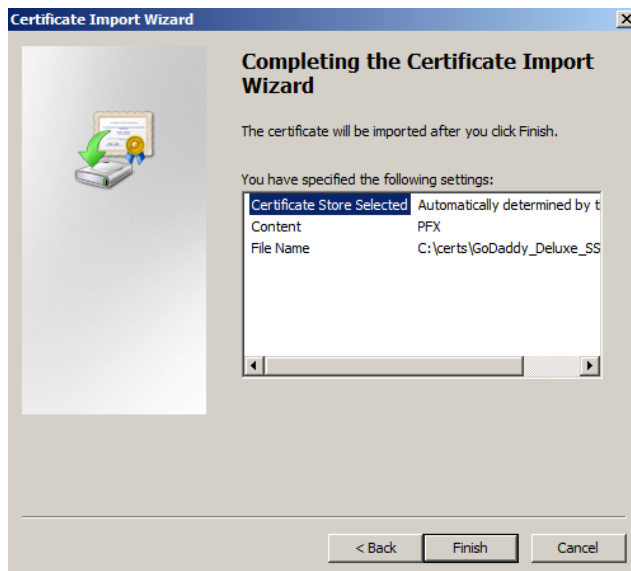


## Purchasing Go Daddy\* Certificates for Intel® AMT Remote Setup and Configuration

3. Leave the default to place automatically in certificate store. Choose **Next**.



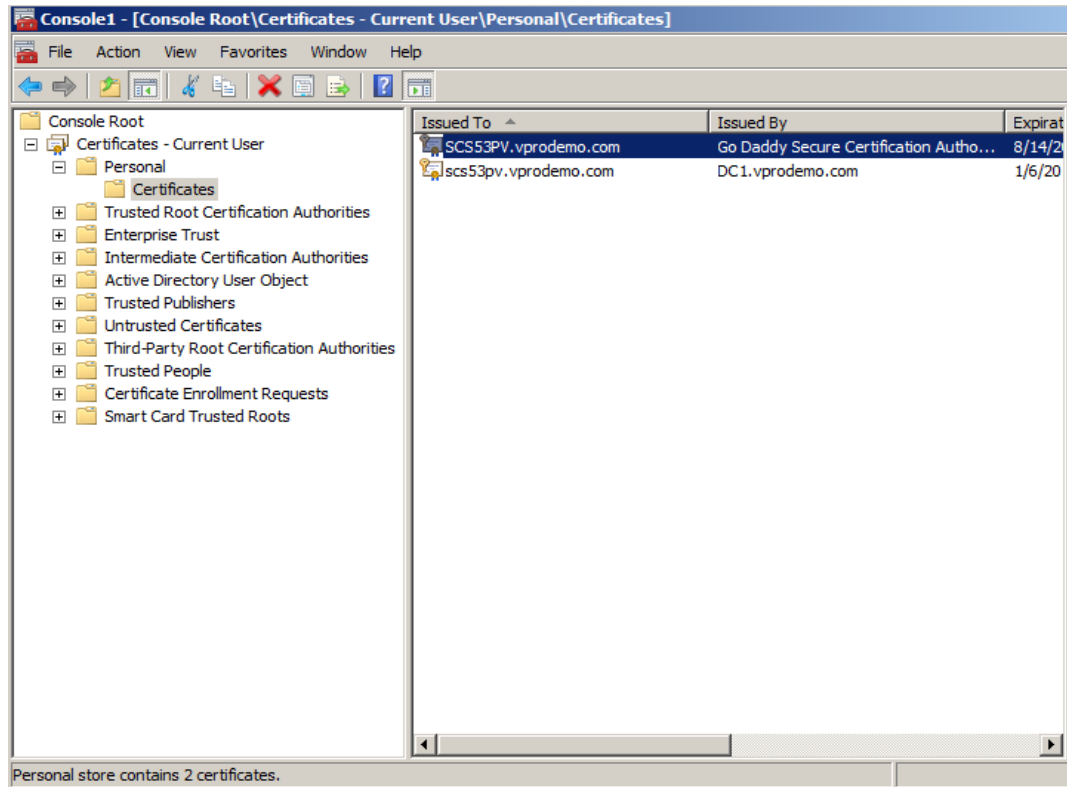
4. Choose **Finish**.



The certificate is now installed in the Current User Personal Certificates store.

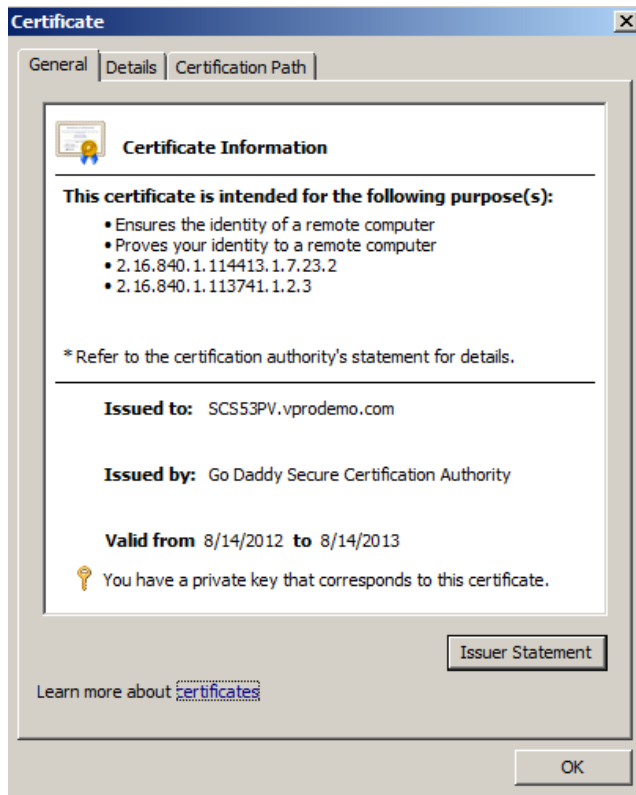
## 5.3 Verify the Certificate Chain

1. To verify the chain, double click **SCS53PV.vprodemo.com**.



## Purchasing Go Daddy\* Certificates for Intel® AMT Remote Setup and Configuration

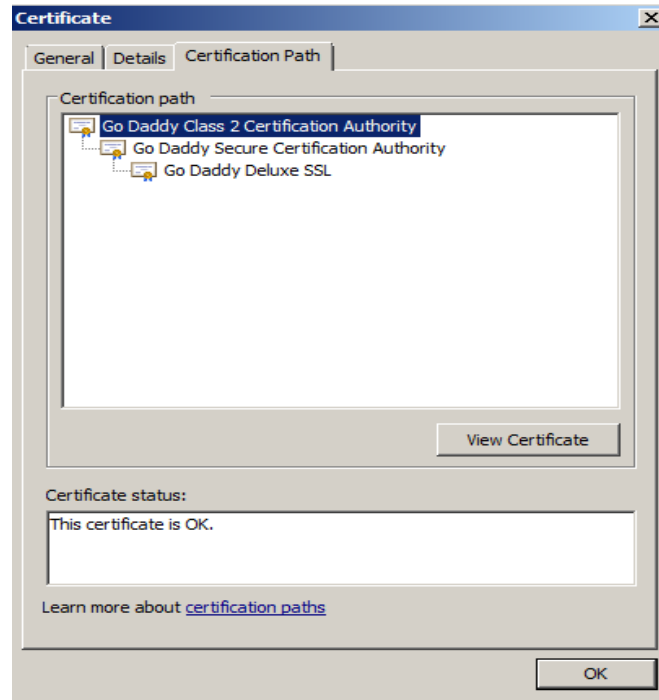
5. In the Certificate Information menu, confirm there are no errors. Check that the private key corresponds to the certificate and the OID **2.16.840.1.113741.1.2.3** is listed. Click the **Certificate Path** tab.



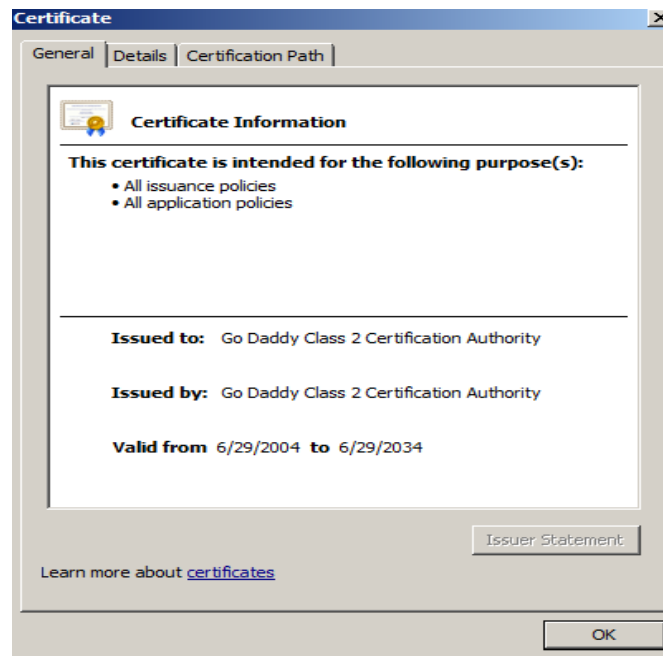


## Purchasing Go Daddy\* Certificates for Intel® AMT Remote Setup and Configuration

6. Check that the certificate is mapped to the intermediate Certificate Authorities as shown. Double click on the root cert **Go Daddy Class 2 Certificate Authority**.

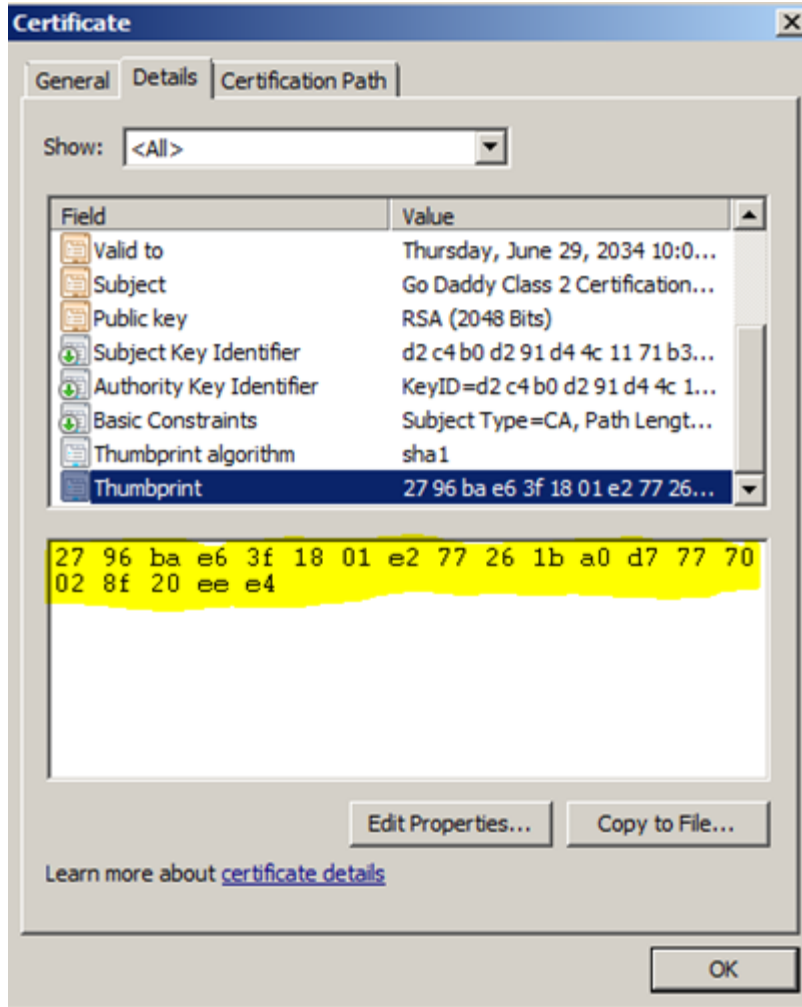


7. Verify there are no errors with the root certificate and click **Details**.



## Purchasing Go Daddy\* Certificates for Intel® AMT Remote Setup and Configuration

8. In the **Details** tab, scroll down and highlight the **Thumbprint** field. The number must match what is shown below.



This Intel AMT setup and configuration certificate can now be used with the Intel SCS remote configuration service (RCS) for remote configuration and maintenance of PCs with Intel AMT.

## 6 Verify that it Works

---

To verify that the certificate works in your environment, create a test environment with one or more Intel AMT capable PCs that have not previously been setup and configured. Follow the instruction in the Intel SCS documentation to try Host Based Configuration in Admin Control mode. If successful, then your certificate is installed correctly.

If you purchased a wildcard certificate, then you should repeat the tests in the other subdomains.